



# **St. Martin's Church**

**La Mesa**

**1948 - 1968**



RIHA CONSTRUCTION CO. was honored to be chosen to construct the new church for ST. MARTIN'S PARISH. Ground breaking for the construction commenced on April 1, 1965 and the church was completed December 17, 1965.

The building consists of 13,500 square feet and the seating capacity is for 1000 people. The Nave of the church is 60 feet wide and the entire church is 177 feet long. The Sanctuary and side Chapels are 96 feet wide. The finished ceiling height in the Nave is 37 feet and the height of the building is 43 feet. The exterior walls are constructed of reinforced concrete and concrete block. The floors are beautiful terrazzo and the roof is cement tile. The altars and wainscot are of marble.

RIHA  
CONSTRUCTION  
CO

8173 COMMERCIAL ST.



LA MESA, CALIF. 92041

469 - 2177



---

**Check with us** before going out on a limb

For your Printing Needs

**Business forms, office stationery, organization rosters,  
Invitations, Sporting Event Programs, Schedules, Tickets,  
Posters, Bulletins, Wedding Announcements.**

**On Time Delivery, Always**

# PLAZA PRESS

643 1st Ave., San Diego, Calif.

**232-7134**

RAY L. VOLK

WILLIAM F. DECKER

---

## EXPLANATION OF PHOTOS ON PAGES LISTED

### Page 3 —

(top left) St. Martin's Holy Name Society Officers, 1967-68. (top right) St. Martin's Woman's Club, 1967-68. (middle, left and right) St. Martin's Ushers. (bottom left) St. Martin's Choir—John Starets, Conductor. (bottom right) Knights of Columbus. 4th Degree Color Corps, Balboa General Assembly.

### Page 5 —

(top row) School Sisters of Notre Dame. Left to right, Sister Mary Ann Williams, Sister Mary Cletus, Sister Paulana Marie, Sister Superior Mary Concetta, Sister Mary Catherine, Sister Mary Magadala.

(second row) Left photo, lay-teachers of St. Martin's school—Rear, left to right, Mrs. Eleanor Roy, Mrs. Marciel Pastore. Front, left to right—Mrs. Joan Hurley, Mrs. Clare Duermitt, Mrs. Elizabeth Pelletier.

(second row) Right photo—Left, Mrs. Carole Forsythe, School Typist; Right, Mrs. Francine Pelletier, School Secretary. (third row) Left photo—Folk Mass Group. (third row) Right photo—Left, Mrs. Mary Schilling, Cafeteria Manager; right, Mrs. Jeanne Paradise, Assistant. (bottom row) Left photo—St. Martin's Kindergarten Class and teacher, Mrs. Marciel Pastore.

(bottom row) Right photo—St. Martin's Football Team with Father Dennis J. Barry, Pastor.

### Page 7 —

(left) "Jesus and the Children." Memorial Stained Glass Window donated by the children of St. Martin's Parish. (right) Mass Altar of imported Carrara marble, white and gold foreground, with tabernacle and matching candlesticks in mosaic, imported from Rome.

### Page 8 —

St. Martin's Church main entrance and patio.

### Page 10 —

"St. Martin and the Beggar"

### Page 49 —

Mr. Alfred Kron, active Holy Name Society and K of C Member.

Mr. Arthur Tracey, St. Martin's Academy first coach, and continued friend to all students.

### Back Cover —

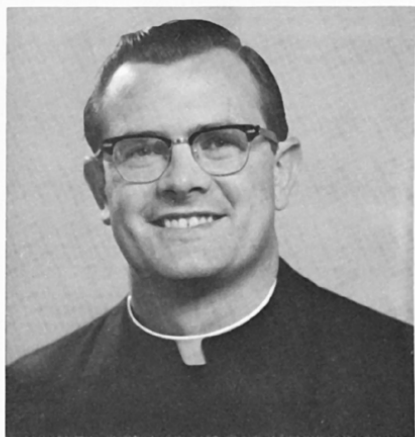
St. Martin's Church at the original location.



# ST MARTINS CHURCH

7710 El Cajon Blvd

La Mesa, Calif

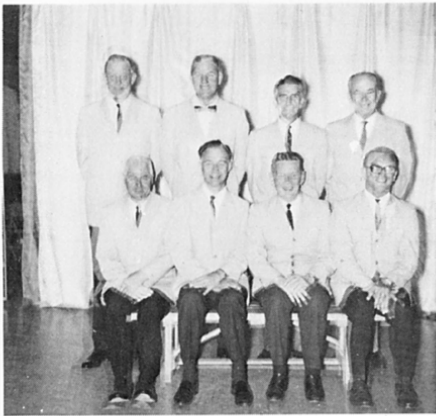


(Upper left)  
Father Dennis J. Barry, Pastor

(Upper right)  
Father Michael Aertgeerts

(Lower left)  
Father Donal Sheahan





ST. MARTIN OF TOURS  
PATRON SAINT OF OUR PARISH

*St. Martin was born in that part of central Europe which is now called Hungary and, as his father before him, became an officer in the service of Rome and travelled throughout Europe for the Roman Emperor.*

*Coming in contact with the early Christians and impressed by their doctrines, he received instructions in the Christian religion. He was determined to give up the profession of arms to lead a life of Christian piety. While preparing to lead his soldiers into his final combat against the invading barbarians, there occurred the episode for which he is most remembered. Meeting a beggar on the highway Martin, through pity, divided his heavy military cloak to cover the unfortunate supplicant. The following night, in a dream, he had a vision of Christ wearing the cloak and heard the words: "Martin, the simple catechumen, has covered Me with his cloak."*

*He decided to visit his home and, crossing the Alps, he entered what is present day Hungary where he converted his mother and other members of his family. Returning by way of Italy, he remained quietly at Milan until the Arian Heresy had subsided in France.*

*From the year 360 to the year 371, he lived quietly in a monastic community which he founded in Liguge. In the year 371 the people of Tours, France, demanded Martin for their Bishop. Despite the many tasks and obligations which burdened him as Bishop of Tours, he made an annual pilgrimage throughout France to extend his Apostolate against heresy and paganism. We have evidence of his presence in Chartres, Paris, Autun, Sens and Vienne.*

*At a Synod held at Bordeaux in the year 384, St. Martin successfully opposed the heretical section led by Priscillian with the help of Emperor Maximus. At the conclusion of the Synod and the condemnation of the heretical doctrines, St. Martin successfully appealed against the persecution of the heretics and won them to his side by his charity and understanding.*

*St. Martin went to his eternal reward on the 8th of November 397 and was buried November 11th, in his Episcopal city of Tours where today a Basilica has been built over his grave as a perpetual reminder of his great works.*





# HISTORY OF ST. MARTIN'S PARISH:

The relocation and reconstruction of St. Martin's Catholic Church in 1948 was a milestone of progress. It is possible to trace the development of La Mesa from a village to a city in conjunction with the growth of the Catholic congregation from a Sunday-morning group to a well-organized Parish.

The stirrings of community spirit in the second decade of this Century were matched by the first aspirations and plans for the knitting of local families into a Parish group. San Diego and the four Southern counties of the State were, at that time, part of the Archdiocese of Los Angeles. La Mesa was a community on the outskirts of San Diego with a population of less than one thousand, the Catholic members numbering less than fifty. And, as priests were concentrated in the areas of heaviest Catholic demands, the only recourse left to outlying districts was to attend Mass at the nearest Catholic Church.

This was the situation in 1920 when the first active steps were taken to provide local facilities for Holy Mass. The immediate obstacles were the lack of priests and the lack of a Church. An energetic group of local Catholics began to investigate the possible locations of a Mass-center and were finally, given permission to use the main hall of a local undertaking parlor. Application was made to San Diego for a priest to come to the community for Sunday Mass, but Church officials found it impossible to spare a priest for such a little congregation. Persistence had its reward and the problem was solved by Father McGrath, acting pastor of Our Lady of Angels Church in San Diego, who agreed to personally undertake the

extra congregation. La Mesa Catholics were grateful to Father for his kindness and interest in them. The setting up of a regular program of Sunday Masses was sufficient to start the momentum which later resulted in the establishment of a full-fledged parish.

Upon the death of Father McGrath and an interruption of the schedule of Masses, Father Vincent Carey took over the community for a few months. He was succeeded by Father McCormack of Los Angeles who was destined to be the instrument of God in the rapid growth of parish life in La Mesa. It became apparent that the many families in La Mesa, Lemon Grove and Encanto constituted a sizeable congregation and hopes were raised for the construction of a permanent Church. This major step required outside help and Father McCormack succeeded in securing the necessary funds from a prominent Catholic family in Los Angeles. The Cavano family had been instrumental in building many churches in the Archdiocese and were willing to undertake the work in La Mesa. The next step was to secure a suitable site for the Church, and after due consideration of property, the corner of Normal Street and La Mesa Boulevard was chosen. Construction began in the year 1921 and the people had the joy of celebrating Christmas Mass in their new Church.

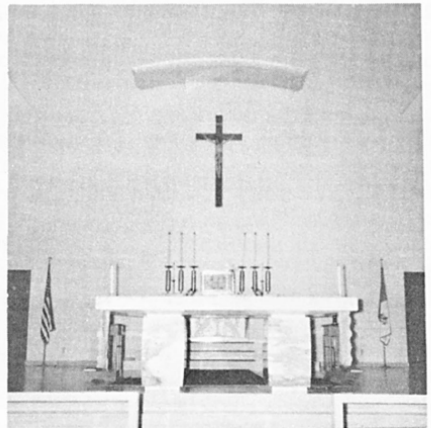
In 1922 the beloved Father McCormack was called to his eternal reward. He was succeeded by Father Siebert who completed the many unfinished details in the furnishing and equipping of the new Church. A Rectory was built and La Mesa had grown to the status of a parish

with a resident Pastor. Father Siebert set to work to develop the spirit of Faith and set up a program of multiple works of Catholic activity in the Parish. The heavy work took its inevitable toll of his health and he was forced to give up the unequal struggle in a few years.

The appointment of Father Joseph Mesny to the pastorate of St. Martin in 1925 was the signal long awaited in the Parish. Father Mesny was a priest of deep piety, profound humility and sanctity. He became not only the pastor of St. Martin's, but also the "Beloved Padre" of the entire community. He was loved and respected by the people of La Mesa as well as his parishioners. The parish records of that time tell of the steady growth of the Faith under the guidance of this well-loved servant of God. It was a mystery to his people how he ever managed to survive the complete indifference he manifested to his own personal comfort. Light, heat, food, clothing were to him only necessary after all other duties had been discharged. Today there are innum-

erable legends of his charity to the poor, his zeal for souls, his quest for spiritual growth in the Parish. Age and sickness made him more determined to spend his last ounce of strength doing good. In 1932 in St. Joseph's Church, San Diego, this beloved priest celebrated the Golden Jubilee of his Ordination and the 27th year of his sacerdotal work in San Diego County.

In 1937 the four Southern Counties of California became the new Diocese of San Diego. In a special pictorial edition of "The Southern Cross" under the date line March 26, 1937, the installation of San Diego's first Bishop, the Most Reverend Charles F. Buddy, D.D., is commemorated. In that edition is a picture of the new Prelate receiving the pastor of St. Martin's and this note: "Father J.C. Mesney, longest time of service in San Diego County, pledging his service to Bishop Buddy." That pledge was honored unto death. Ill health forced Father Mesney to cease from active work, but long before he retired he had won for himself the deepest gratitude, love and respect of the entire parish and city. He had exemplified Charity and won Charity. In ten short years, he had infused a Christian Spirit into an infant Parish that was to blossom in the souls long after his departure from this life.



The Reverend Michael Flahive succeeded Father Mesny in 1936 and 1937. Father Flahive was no stranger to La Mesa as he had acted as substitute for Father Mesny on many occasions when the elder priest was forced to rest. It looked as if the parish had found this young priest a worthy successor to its departed Apostle. However, the Diocese of San Diego and indeed all California now entered a period of extraordinary growth and development which called for youthful energy and hard work. Father Flahive was selected to undertake the building of a new parish and Christian outpost in Barstow. It is a consolation to his many friends in La Mesa that he executed that task with patience and skill and merited the unstinted praise of the Bishop and people for the long and devoted years spent in the desert.

Father Woodcutter succeeded Father Flahive in 1937. His tenure of office was also of short duration since ill health forced him to retire in less than two years of parish work. However, the short time was marked by many practical improvements in the Church building and the rectory and in efforts to keep up with the needs of the ever increasing congregation.

In October 1938, Reverend Thomas Lehane was appointed pastor of St. Martin's Parish. Father Lehane brought to La Mesa the experience and energy needed to guide it in what was to be the crisis of growth and expansion in the troubled years of World War II. La Mesa suffered, with all California, an overwhelming influx of war-workers and service families, together with a War that caused a shortage of materials for building. St. Martin's Parish grew in numbers and activity. Extra Masses were added to accommodate the enlarging congregation and plans drawn up for post-war expansion. Every possible improvement was instituted in the Parish and despite war-caused difficulties, the Church was able to meet every crisis with speed and energy. The records up to the year 1948 indicate the amazing development of the Parish. Catholic men and women's groups had been organized. A comprehensive Catechism program was

under way for the youth of the Parish. The number of marriages, baptism, confirmations, instructions and Sunday Masses surpassed all previous records.

In 1948, Father Lehane was promoted to the Parish of St. Mary, Star of the Sea at Oceanside and with this promotion came the well-deserved honor of the Deanship of San Diego County. The preparations made by Father Lehane were assumed by the succeeding Pastor, Father Dennis J. Barry, who was appointed from El Centro where he had built St. Mary's Church. The location of St. Martin's Church did not hold any hope for expansion and more suitable sites were inspected.

The present Church property located on El Cajon Boulevard was selected for future and present expansion. It contains the necessary space, is close to public transportation, and holds a commanding view of the City. The immediate need for St. Martin's in 1948 was expanded facilities for Sunday Mass. The Parish which thirty years before did not warrant a full-time Pastor, now found that even with four Sunday Masses it was almost impossible to obtain a seat in Church. One thousand people were seeking to attend Mass every Sunday in a Church that measured 70 by 40 feet. To reduce the cost of construction, it was decided to use the materials in the old building as far as possible.





In a spectacular feat of "moving" engineering, the Church was rolled from its former location and placed on the new ground. It was then cut completely in two and expanded to exactly twice its original length. To preserve the salient features of the former Church, the interior structural design was left almost untouched. The exterior had to undergo extensive alterations to bring about the desired Early California Mission effect. Flying buttresses were retained and increased in number. The tower was completely re-designed to balance the enlarged nave. The Church roof was given a Mission Tile cover and the tower was crowned by a tiled dome of soft blue and gold. The building presented a striking appearance on a commanding position over the junction of the two main boulevards of the city of La Mesa. In conjunction with the reconstruction of the Church, work was rushed to prepare a new Rectory on the grounds. With slight alterations an already existing building (sanitarium) became a spacious Rectory with ample accommodations for Church group meetings and Parish parties. This project took six months to complete and the Church celebrated Christmas Mass, 1948 in the completed building.

In 1950 it was obvious to both priests and parishioners that a parish school was an absolute necessity in a growing and expanding parish. In the fall of 1950 construction was begun on the St. Martin Academy and a suitable convent for the staff of sisters who were promised to the new school by the Mother General of the of the School Sisters of Notre Dame, St. Louis, Missouri. In September, 1951, the doors of the Academy opened to the first classes - eight full grades in elementary education were registered which was followed, in later years, with the introduction of a kindergarten.

In May 1952, the Most Reverend Charles F. Buddy dedicated the school and conferred the Sacrament of Confirmation on the two senior grades.

October, 1952, the parish hall was com-

pleted and the cafeteria appointed to supply hot lunches for the students.

In 1956 four new class rooms were constructed and the enrollment reached 500.

La Mesa continued to expand at a rapid rate until it became apparent that the Church could no longer accommodate the congregation on Sunday mornings despite the increase in the number of Masses. Consequently, a new church became an obvious necessity. In 1961 the first of many Fund Drives began which were to extend over a three and four year period. June 18, 1964, in the presence of a large group of parishioners, ground was broken for the new site by the pastor, Father Dennis Barry, and the site was blessed according to the full Ritual of the Liturgy.

On April 5, 1965, construction was started under the presidency of George Riha, of the Riha Construction Company, and the guidance of Mr. Arthur D. Decker, AIA, as architect. Throughout the long spring, summer and fall the building gradually took shape and in a masterly drive the work was completed in time for Christmas Midnight Mass, 1965. We may point out, at this time, some of the outstanding features of the new St. Martin's Church:

There are 22 Memorial stained glass windows donated by families of the Parish. In the terrazo floor, center aisle, there are seven 10 foot panels, each containing a symbol of St. Martin in the following sequence: (1) Fleur-de-leis, indicating his French Apostolate (2) the sword, indicating his early military career (3) the crozier, indicating his Episcopal office (4) the barque of the Church indicating his Diocesan affiliation (5) the outstretched hand which symbolizes the miracles performed by the Saint in his life time (6) the human heart pierced with an arrow, indicating his life-long charitable concern with suffering humanity (7) the Alpha and Omega, indicating the return of his soul to God at the end of an heroic Christian life.

The 14 Stations of the Cross are mosaics imported from Italy and donated by

families of the parish. The Altar rail of imported marble is a simple yet traditional convenience for the devout reception of Holy Communion. The Mass Altar, raised above four marble steps, is of imported Carrara marble of white and gold and also located as to be easily visible from all parts of the Church. The broad Sanctuary leads back to the Altar of the Blessed Sacrament, which in turn follows the design and form of the Mass Altar. The tabernacle, brought from Rome, is of heavy bronze encrusted with Venetian mosaic. The six matching candlesticks flanking the Tabernacle are also in the motif of the bronze and mosaic Tabernacle.

On the Epistle side of the sanctuary is the glassed-in Children's Chapel. On the Gospel side of the Sanctuary is a side Chapel big enough to accommodate 90 people.

An extensive, roomy, choir loft graced by a new Conn Artist Organ provides a comfortable and pronounced location for rendering of the sacred Liturgical music.

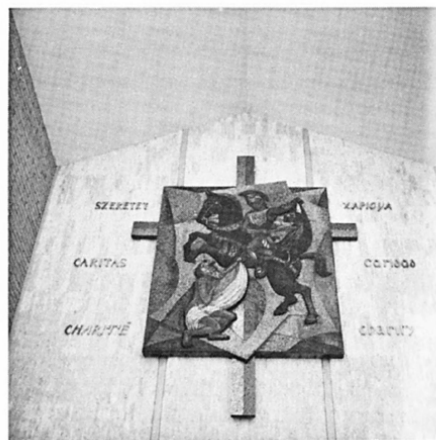
The eight, hand-carved, wooden statues from Italy, chosen by their donors, are placed on the Carrara marble altars circling the Nave of the Church. To commemorate the Patron Saint of the Church, an especially designed and created Mosaic by Dr. Joseph L. Young, FIAL (of Los Angeles) has been placed over the main entrance of the Church, depicting Saint Martin in the classic rendition of the parting of his cloak. This Mosaic is surrounded by the word "Charity," in six languages – spelled out in heavy bronze lettering.

This will be a constant reminder to the members of the parish of the outstanding virtues of their Patron.

This Anniversary Booklet which we have prepared for this year 1968 will, we trust, be a permanent pictorial record for all families of the Parish who have been associated with the development and expansion of the Catholic Church in La Mesa.

Father Barry will be eternally grateful to the men and women and to the youth of the Parish who have worked so diligently and consistently in the promotion of the Kingdom of God in this area. We have received compliments throughout Southern California on the excellence of our new Church, on the comfort and convenience made available to the congregation in the carrying out of the various requirements of the Liturgy and the celebration of Holy Mass. It is our hope that the presence of this Booklet in your homes will be a constant inspiration to continued cooperation and work for the many tasks that lie ahead of us.

From 1948 to 1968 twenty long years have passed – however, we can be assured these 20 years have not been spent in vain, and we are grateful to Almighty God that in these two decades, the Charity and virility of St. Martin have been the guiding light in the development of this Parish which is dedicated to a Soldier-Saint.



# MEMBERS & FRIENDS

CHILDREN ARE LISTED IN ORDER OF AGE . . . ELDEST FIRST



ABOSAMRA, Grace



ACOSTA, G. B. & Fern:  
Catherine



ADAMSON, May



ADVENT, Ann



ALBERTERNST, Margaret



AMES, Robert & Josephine



ANDERS, Arthur & Muriel



ARAIZA, Alfonso & Virginia  
Lisa Ann, Leslie



ANDOLSEK, Frank & Tonska: Dennis, Peggy, Dean



ARDOIN, Leonard & Lucille



ARNETT, Virginia



ARROWSMITH, Frank & Verla



ASARO, James & Anna: Lena



ASHBY, Theodore & Mercedes  
Charles, Marie



AZEVEDO, Manuel & Mabel



BABIN, Sherly & Beatriz:  
Cecilia



BAILEY, Jeanne



BAILEY, Warren & Eloise: Kathy, Paul, Jim, Bill



BAKER, Janet: Theresa, Timothy



BALDWIN, Mrs. Thomas



BANSEPT, John & Josephine



BALISTRERI, John & Rosalie: Josephine, Marianne, Nina



BARNES, Jerry & Maureen  
Josslyn



BARR, Edward & Irene



BARRANCO, Charles & Valery: Linda, Mary Ann, Charles, Robert, Janice



BATES, George & Carol: Julie, George, Michele



BATTIN, Ken & Wilma: Charles, Donald, Christi, Michael



BAUGHMAN, William & Betty: Michael, Michelle



BECKER, Mary: Doris



BELT, James & Vivienne



BEMIS, Frank & Anne: Susan



BENKO, John & Lou



BENSON, Dorothy: Dori, Donna



BERARDNELLI, Nicola & Valia



BERRILL, Clem & Eileen: Michael



BEVILACQUA, Jerry & Florence: BLINZLER, Urban David, Marcia







BLESSING, L. F. & Lucille: Jane, Mary, Ann, Bill, Donna



BOBBY, John & Anna



BORGERDING, Charles & Lucille



BOELHAUF, Harold & Bertha: Linda, Russell, Laura



BOTTE, Louis & Peggy: Lisa, Paul, Anthony, Chris



BOWMAN, John & Marion: Frances, Molly, Eileen, Conway



BOYD, Anna



BOYLE, T. G. & Marian: Kathy



BRASCHE, Lawrence & Edith: Edythe



BRIGHTON, Inez: Carleton, Catherine



BRODING, Harold & Marion: Cathy, Margo, Larry, Bill, Monica, Beth, Dona



BRONK, Julius & Virginia



BROWER, Arnold & Opal



BROWN, Charles & Helena:  
Renee, Bridget



BROWN, David & Irene



BROWN, Gertrude



BROZIK, John & Patricia: Larry, David, Catherine, Eugenie,  
Steven



BUCKELEW, Everett & Adeline



BURDICK, Carl & Mary



BURROWS, Terry & Dolores:  
Steven, Colleen, Susan



BUTCHER, Celeste: Andrea, Marie, Roberta



CALABRO, Louis & Ann:  
Steven



CAMPBELL, James & Lorraine: Anne, Mike, Tim



CAMPBELL, Rita



CAPPELLO, Louis & Carolyn:  
Anthony, Vincent,



CAPUANO, Eugenia



CARLIN, James & Madeline: Jamie, Elaine, Thomas



CARDENAS, Virginia: Carolina



CARLINO, Victor & Genevieve: Sam, Gene Ann, Victor



CARPENTER, Marie



CARTER, Thomas & Julia: Juliann, Thomas, Therese,  
Christopher, John, Joseph



CASS, John & Shirley: Virginia, Pamela



CASSIDY, Arthur



CASTIGLIONE, Joseph & Orlena: Joseph, Sandra, Nicholas,  
Susan



CELESTE, Ben & Catherine



CATERINA, James & Theresa: Gerry, Steve, Bill, Donna, Paula  
Richard



CAUCHON, Eugene & Margaret: Leo, Theresa, Helene,  
Stephanie, Lisa



CAVANAGH, Sandra: Johnna, Carolyn, Cynthia, David



CHADWICK, Richard & Marie: Mary Kay, Richard, Sandra,  
Jackie, Donald



CHARLES, Bobby & Margaret:  
Stephen, David



CHARTIER, Wilfred & Clara



CHESLOCK, Rita: Stanley,  
Terry



CHEVALIER, Edward: Rene



CHUBB, Eugene & Carol:  
Kim, Tommy



CHUBB, Jane



CLARKE, William & Amelia: Karen, James



CODDINGTON, Walter & Helen



CODDOU, Joseph & Yvonne: John



COLE, Marie



COLE, Vernon



CONTI, Anthony & Melvis: Cynthia, Anthony, Melani



COOLEY, Robert & Kathryn: Bruce



CORE, Frank & Antonina



CORELLA, William & Maria: Billy, Elsa, Richard, Maurice, Amano



COSTANTINO, John & Pasqua: John, Lisa, Tina



COSGRIFF, Richard & Rita: Mary Michele



COPHER, Claude & Margaret: John, Mary, Mike



COX, James & Patricia





COY, Kathleen



CREAGH, Betty: Timothy,  
Thomas



CILLY, Lucienne



CUNNINGHAM, Gordon &  
Pearl: Gordon Jr., Christine



CRUSE, Joseph & Anna: Carol, Beth, Cathy



CURLEY, Charles & Leona: Laureen, Patricia



CURTIS, Ervin & Joelyn: Shawna, Dean



CUTTER, Donald & Josephine:  
Donald, Debra



DALTON, Harold & Marie



DANE, Richard & Magna: Kathleen, Karen, Douglas



DAVIS, Joe & Dolores: Aida, Maria Elena, Camen, Amida



DAVIES, James & Nikki:  
Pam, Patty



DECKER, William & Beverly:  
Rae-Dean, Lynn



DEHOFF, David & Charlene:  
Sharon



DEMARIO, Lucy



DeMONTAGNE, Maurice & Evelyn: Denise, Diane, Richard



DENNING, William & Jane



DeROSE, Henry



DESANTIS: Nicky, Lou, Lisa



DETERS, Ray & Viola



DILABIO, Ronald & Marquerite: Richard, Anthony, Elaine



DETERS, Raymond & Patsy:  
Raymond, Mary



DILL, Elmer & Nancy: Anthony, Peter, Vincent, Larry, Tina,  
Stephen, Catherine, Cecelia



DOBRON, Daniel & Juanita:  
Thomas



DONNELLY, John & Nanette:  
Mark, Laurene



DORIA, John & Beatriz: Andrea, Michele, Juliana, John, Victor,  
Lisa, Consuelo, Gabriela



DORVAL, Alfred & Belle



DOWNEY, George & Emma:  
Edward



DRAZKOWSKI, Jerome &  
Michelle



DRIESCHER, Elva



DUFFY, Elizabeth



DUNCAN, Paul & Frances



DUNCAN, Thomas & Shirley: Michael, Mark, Mary



DUNN, Dewey Mrs.: Dennis,  
Tim



DUPREE, Floyd & Leona: Mary, Michael, Dennis



DYE, Harlan & Victoria: Richard, Cecilia, Dorothy, Rosalie



DYE, George & Leonora



EASLER, Kenneth & Patricia: Kimberly, Valerie, Kevin



FEGAN, Evelyn



ESQUIBEL, Benjamin & Tillie: Lucillie, Vallirie, Victor, Triney, Richard



FERRARA, Barney & Frances Marie: Threse, Jennifer, Thomas & Linda



FELDHAUS, Bernard & Hilda



FERRER, Thomas & Rita: Robert, Danita, Stephanie, Cynthia, Peggy



FINNIGAN, Charles & Hermine  
Karlleen, Mary



FINCH, Frank & Neola: Mike, Linda, Timmy, Tommy, Peter, John, Danny



FLEMING, William & Helen: Michael, Lisa, Lance



FISCHER, Irwin & Helen



FORD, John & Alice:  
Anne Marie, Patrick



FORREST, Virginia



FOX, William & Martha:  
Mary Christina



FOUCAULT, Leon Phillip & Mary Louise: Leon, Kathryn,  
Teresa, Sandra



FREED, James & Helen: Wendy, Lisa, Mark, Thomas



FOX, William & Phyllis:  
Jennifer



FREITAS, Patrick & Ramona



FROWISS, Mattie



FUGINA, Henry



GAEB, Mercedes



GARCIA, Ygnacio & Adela:  
Ygnacio, Michael



GARDNER, Ralph & Sheila



GEORGE, Jed & Faye: Jimmy





GAUGHEN, David & Barbara: Davey, Barbara



GERHART, Donald & Mary: Kevin, Keith, Kenneth, Kirk, Margaret Alberterst



GETCHMAN, William & Jennie



GIERNET, John & Darlene: Allen, Dale



GILB, Walter & Virginia: Marlene



GILMORE, Gaynor & Anne: Mary, Kelly, Terry, Annette, Lynn



GIMBEL, John & Virginia: Cathi, Kelly



GILMORE, Vincent & Jean



GLIEBE, Joe & Frieda: Marilyn, Michael, Cathy Jo



GOLDSMITH, William & Beatrice



GOODE, Elizabeth: Danny



GRANTHAM, Gertrude: Pattie



GROSSE, Alvin: David, Jeannine, Roberta



GRUNTORAD, Ervin & Lois:  
Susan



HAGEDORN, Herman &  
Madeline: Denise



HAGEN, Ann



HAIDLEY, Lyle & Matilda:  
John Russell



HANSEN, Peggy: Karen, John



HARRISON, Sam & Mildred: Sandy, Randy, Janine, Roger, Ronald



HAWKINS, Warren & Frances



HAVILAN, Leo & Rosemary: Karen, Melissa, Kathleen



HEAD, Robert & Mary Ann: Diana, Donna, Deborah



HAYNES, Charles & Clara:  
Kathy



HEILMAN, Dea & Thelma



HENLE, Alois & Vera



HERALD, Robert & Marie: John



HENRY, Gordon & Mary Jane: Geraldine, Roy, Katherine



HICKEY, Margaret: (deceased)  
Margaret Hood



HINCK, Marilyn: Susan, Joyce



HOFF, George Franklin & Charlotte: Marie, George, Christie,  
Michelle



HOEFLER, Edward & Marie:  
Paul, Bruce



HOFFMAN, Lucy



HOLLAND, Dr. George: Linda, Bob, Nance, Sarah, Carol



HOLLEN, John & Sophie



HORNE, Ernestine



HORTON, Catherine



HORTON, Roy & Louise



HOWARD, James & Lucy: Patricia, Susan, Jim



JABLONOWSKI, Raymond



JACOBS, A.L. & Jolietta



JACQUES, Leon & Sue



JOHNSON, Harold & Beatrice



JEFFERDS, Donald & Virginia: William, Kathleen, Patricia, Margaret



JOHNSON, Richard & Margaret: Michael, Barbara, Susan, Vincent



JOHNSON, Mary



JONES, Douglas & Patricia: Kathleen, Douglas, Karen, Susan, Robert



JONES, William & Marie Louise



KAUFMAN, Blanche



KEAIS, Dorothy: Jamie, Janice, James, Terence, Janet Rene



KELLER, Ruth



KEATING, Francis & Loretta: Debra, Lisa, Lori, Dena, Donald, Joanne, Phyllis, Terry, Dennis, Bernadette



KELLY, Redmond & Isabel: Betty Anne, Debbie, Madeline



KELLY, Larry & Jane: Larry



KELLY, Ronald & Pamela: Lani, Shawna, Justine



KELLY, Thomas & Jean



KENWARD, Fred & Frances



KERLEY, George & Katharine



KERMODE, William & Elizabeth: Audre Ann



KERNS, Charlene: Don, Michelle





KINSELLA, James & Dorothy: Katie, Agnes, Sally, John, Patrick



KIRK, Carl & Rosalind: Yvonne, Cheryl, Curtis, Carlo



KINZIG, Mary



KNOX, Dorothy: Nancy, Rebecca, Karen



KOLLARS, Hilary & Rose Mary  
Timothy, James



KOENIG, Leonard & Bobbie: Michelle, Paul, Suzanne



KRAFT, Wayne & Janet: Lisa, Joseph, John, Paul, Mary



KOOGLER, Roy & Leona



KRAIL, Irving & Gladys



KRAMM, Hans & Patricia: Marlene, Rosalie, John, George



KRON, Dorothy



KUCERA, Charles Jr.



KUCERA, Darrell



KUEPPER, Kurt & Angela: Erica



LABER, John & Helen:  
Daniel, Steven



LABREQUE, Elizabeth



LACERTE, Onil & Georgette: Onil Jr., Pamela



LAFRENIERE, Gerard &  
Patricia: Michael, Dorene



LAMB, Dorothy



LAMOEF, Jean



LANGLOIS: Eugene Jr., Kari



LANOIS, Esdras J. & Dorothy



LARSON, Jack & Alice: Paul, John, Jack



LAWLOR, Jean



LEHNER, William & Genevieve



LEMUS, George & Carmen: Agnes, Sarita, Henry, Robert



LESTRANS, Joseph & Marie



LEVEQUE, Emile & Trudy:  
Vickie, Florida C.



LEVIKOW, Lillian



LINDSEY, Robert & Rosemary



LINT, Marion: Deborah



LIPE, Robert & Mary



LOFTUS, Charles & Marianne: Claudia, Robyn



LORDEN, Frank & Rose



LOMI, Robert & Patricia: Dennis, Steven, Mark, Kevin,  
Janine, Shawn, Damon



LOWE, Gerald & Dorothy



LUCERO, Mike & Louise



LUKAS, Joseph & Dorothy Irma



LUPO, Domenico & Antoinette



MAGNUS, Edward & Vivian



MALLEK, Selma



MANTOAN, Aldo & Mary



MANUEL, Bernice: Anne, Nina, Chris, Joan, Mary, Rose



MARAK, Myrtle



MARASY, Marc & Virginia: Maureen, Marcia



MARINESI, Joseph & Angela



MARTIN, Lucille



MARRIOTT, Francis & Lois: Valerie, Cynthia, David, Peter, Michele



MARUSKA, Frank & Helen



MATTHEWS, John & Ann



MASSON, Jack & Pat: Aaryn, Ann



MAY, Harold & Mary



MCARRON, Terence & Rosemary



MCCABE, Mary



MCCALLION, Betty



MCCARTHY, John & Eileen: Michael, Kathy, John, Gary, James, Anne, Tisa



MCCARTHY, Tom & Dorothy: Tim, Pat, Nancy



MCCLURE, Ray & Yvonne: Michael, Larry, Lorraine



MCCORMICK, James & Mary: Trudie, Martin, Eileen



MCCURDY, Catherine



MCGINNIS, Anne





MCGRIEVY, J. L.



MCKEE, James & Julie: Cherri, Howard, Rebecca



MCKENZIE, Esther



MCKEON, Leo & Josephine



MCLAUGHLIN, Joseph & Norene: Joseph, Erin, Thomas, Michael, Patricia



MCMULLEN, John & Mafalda



MCNICHOL, Frank & Helen: Francis, Eileen, Kevin, Timothy



MCVEIGH, Molly



MEADE, John & Mary



MEADE, Thomas & Janice: Suzanne, Christopher



MEIER, Arthur & Eileen: Kathleen, Arthur, Marie



MENDENHALL, John & Margaret



MERINO, Albert & Marino: Mark, Bruce, Nancy



MERTENS, Rose



MILICH, George & Catherine: Edward, David, Paul



MILLER, Patricia: Kimberly, Edward III



MILLER, William & Elisabeth



MILLER, Nelson & Lidwina



MILLS, Andrew & Helen: Judy, Marc, Jennifer



MILLS, Judith



MINANDO, William & Mary: Frank, Mary Agatha



MINCEY, Peter & Alta: Mary Ann, Melinda, Clara



MONCK, George & Aisne: Leley



MITCHELL, Galen & Patricia: Bruce, James, Kathleen, Robert, Thomas



MONACO, Edward & Billie Joann: Mark, Jeffrey, Brian, Stephen



MONTIJO, Karl & Katherine: Stephen, Thomas, Robert, Timothy, Karla



MORAN, Jim & Patricia: Jim Jr., Mary, Sharon, Mike, Maurice, Peggy, Billy, Danny



MORGAN, Alfred & Noni:  
Miss Anne O'Reilly



MORIARTY, Jerry & Eva



MURAWSKY, Edward & Helen:  
Jane, Edward



MURPHY, James & Marie:  
Maureen, Dan



MURPHY, Dr. William: Theresa



NANARTOWICH, Edward & Dorothy



NASCHAK, John & Katherine: Michael, Michele, Bruce



NEEDHAM, Louise



NEMECEK, Leland & Janet



NUGENT, Lonnie & Adele: Teresa, Dennis



NESBITT, Mary Clare



OBERBAUER, Carl & Hilda



O'DONNELL, Albertine:  
Emily Hobbs



O'DONNELL, Mary



OLIVER, Norman & Lillian: Mark, Renee, Stephen



ORSBORN, James: Jeffrey, Dennis, Bruce, Freddy, Noel



ORTEGA, Jesus & Caroline: Carlos, Fernando, Marco



OSWALT, Dean & Sally: Marsha, Michael, Deborah





OTEM, LaVern & Phyllis: Victoria, Melissa, Regina



PALLULAT, Henry & Dorothy: Ellen, Donna, Susan, Lisa



PAYNE, LeRoy & Esther:  
Timothy Lee



PERKOVAC, Joseph



PERKOVAC, Steve & Herta: Irene, Gary, Christian



PETROWSKI, Joseph & Mary:  
John, Mike



PFOHL, Richard & Michele: Alan, Scott



PIERCE, Arvilla



PILKERTON, William & Larinda: Stephen, Deborah, Raymond,  
David



POSTULKA, DeWayne & Mary Ann: Perry, Patty, Danny, Lon





POWERS, Henry & Irene: Gregory, Catherine, Mary, Leona



PROVO, Frederick



QUIRICO, Jeanne: Karen, Thomas, Stephen



QUACKENBUSH, William & Margaret: Billy, Diana, Gary, Wendy



RACINA, Anthony & Pauline



RASMUSSEN, George Ann



REICHERT, Tom & Jean: Jeff, Therese



REMINGTON, Sally Hayes: Rick



RENNY, William & Rosemary: Patrick, Christine



RICHMOND, Mike & Martha: Michelle, Gregory, Michael



RICKS, Irene



RIHA, George & Dorothy:  
James



RITZ, Joseph & Kathryn: Joe,  
Tom



RODRIGUEZ, Santiago &  
Reinaldo: Nellie, Martin



ROSENBERGER, Frank &  
Margaret: Claudia



RUDELL, Marie



RUEMPING, Norbert & Eileen



RUNETZ, Mae



SAENGER, Clarence & Julie



SALMON, Albert & Henrietta: Al, Tony, Darlene, Joey



SAPPER, Eugene & Elaine: David, Mike, Steven, Amy



SAN MARTIN, Linda



SARDINA, Frank & Rose: Roseanna, Joseph, Katherine, Marie,  
Francesca, Gaetano



SAW, Thomas & Madelyn:  
Thomas



SAVOIE, Lloyd & Yolanda: Lloyd, Carol, Donald, Charlene, David



SAWADE, Ralph & Dona: Lynn, Lew, Cathy, Gayle



SCHAFER, Edmund & Bernice: Martin, Kathryn



SHELL, Vernon & Joyce: Michael, Dennis



SCHENK, Marie



SCHMIDT, Charles & Similienne: Clarence, Charles



SCHNEIDER, Mary



SCHNIEPP, Glen Paul & Ann: Glen Jr., Mark, Diane



SCHREIBER, Harold & Yvonne



SCHUMACHER, Janet: Joan



SCOTESE, Atilio & Carol: Lee, Patricia, Anna



SCOTT, Kenneth & Marian: Timothy, Mark



SEE, Donald & Correen: Jack, Sharon, Linda, Eileen, Sally, Danny, Bridget, Denise, Molly



SEMANCINSIN, Joseph & Mary: Carol, Mark, Martin



SEVCIK, Henry



SHAIEB, Afify



SHANLEY, Michael & Veronica: Michael, Thomas, Veronica, John



SHAIEB, Edward & Helen: Bill



SHEA, Betty



SHUBIN, William & Margaret: Sandra, Judy, Anne Marie



SHULTZ, Joseph & Helen: Joseph, Ann Maria, Carolyn, Danny, Mary Kay



SICK, Francis & Margaret: Dan, Bernadette, Bernard, Conrad, August, Donna, Steve, Max, Christopher, Francis, Tonya



SIGLER, Roy & Evelyn



SIMANELLO, James & Dolores: James, Susan, Mary Ann, Kathryn, Judy Ann



SIMPSON, Ruth: Kenneth, Wesley, Lucy C. Vidal



SINGH, Joseph & Virginia: Mary, John



SKILTON, F. H. & Betty: Marleen



SLABICK, Mike & Frances



SLEET, Marshall & AnnaMae: Jeffrey



SMELKO, Albert & Margaret



SMELKO, William & Sally: Sarah Jo, William, Mark



SMITH, Alfonso & Mina: Darlene, Kathryn, Dennis



SMITH, Robert & Bonita: Susan, David





SMITH, Stella



SOKACH, Louis



SPECKMANN, William & Pauline



SPIESS, Harold & Lucille



SPIESS, Valerie



SPIVEY, Alfred & Corinne: Dennis, Christopher, Stephen, Timothy, David, Roberta, Robert



STEUERMANN, Florence: Mary Jo, Sarah



STRANGL, Thomas & Wilma: Dawn, Mark



STRANSKY, Leslie & Troy: Lester, Judy, Adam



STRAMPFER, Otto & Clara Ellen: Juliana



SWIFT, Walter & Betty: Maura, Sheila, Shawn, Brian, Ellen, Stacey, Maria Ramos (Exchange student from Peru)



SYLVESTER, Joseph & Evelyn



TEBO, William & Josephyn



TEICHMAN, Richard & Neda: Richard, Suzanne



TERRELL, Fern: Barbara, Jean



THIEN, Frank



THIEN, Theresa



THOMAS, Donald & Mary: Lee



THOMPSON, Cyd



THORNTON, Catherine



TICKNOR, Ruth



TILLEY, Hoyt



TIMBROOK, Elmer & Elizabeth



TORBECK, Ambrose & Margaret



TOVEY, Clara



UBER, Wilma



ULBRAND, Cleo



VAN ARSDALE, John & Jean: Cynthia, David, Judy, Susan



VANDEMBERG, Arthur & Dorothy: Ronald, Lorelle



VAN FLEET, Barney & Kathleen



VARGAS, Thomas & Celina: Mercedes, Juan Carlos, David, Javier, TOMAS Jr., Jesus, Sergio, Gloria



VATER, Albert & Barbara: Connie, Richard, Edward, John



VASIL, Michael & Mary



VEGA, Carlos



VELTON, Edward & Jane: Edward, Paul, Katherine, Jennifer



VIRISSIMO, Richard & Virginia: Debra, Richard, Rebecca, Jeffrey, Danny, Jennifer



VOGT, John & Marjorie



VOLK, Ray & Evelyn



VOLZ, Paul & Marcebilla



VONGEHR, Dieter & Ria: Nadia, Monique



WACHTEL, Reuben & Georgine



WADE, Wallace & Esther: Wally, Rick, Pat, David, Mary, Esty, Mike, Tim, Tom, Ms. Esther Hickey



WAGNER, Marie



WALSH, Margaret: Kay



WALLACE, Robert & Patricia: Kathleen, Kevin, Kim, Chris



WALSH, Gerald & Ouida: Cecelia, John, Madalyn, Catherine



WARREN, Arthur & Matil: Martin, Valerie, Jay, Danny, Edna



WELLS, William & Mary: Billy, Danny, Laura





WAMSLEY, James



WHERRY, Werner & Mavis: Brian, Kevin, Deena



WIER, Eva



WILSON, Charles & Dorothy:  
Gordon, Kathleen



WILSON, Daniel & Rene



WINFREE, William & Louise: Rebecca, Daniel, William,  
Susanne, Paul, Jonathan



WOLGAT, John & Helen: Barbara, Thomas, Raymond



WOLL, John & Dorothea: Sondra, Dennis, Catherine, John Jr.,  
Jeffrey



WOLGAST, Otto & Jean:  
Carol



WOOD, Edward & Ann: John,  
Lloyd



WRIGHT, Patricia



WRIGHT, Anne: Elizabeth,  
Judith





YANDA, Robert & Johanna



YARRIS, Martha



YBARRA, Frank & Nellie:  
Olivia



ZEGLER, Henry & Helen



KRON, Alfred



TRACEY, Arthur

# Directory

- 465-1070 ABOSAMRA, Grace--1301 Alhambra Dr. , El Cajon, 92020
- 582-1000 ACOSTA, G.B. (Fern)--Catherine--1442 Colton Vista Dr. , San Diego, 92115
- 469-7700 ADAMSON, Mrs. May--1000 Sunset Dr. , La Mesa, 92041
- 460-1000 ADVENT, Ann--1000 La Mesa Blvd. , 92041
- 469-1000 ALBERTERNST, Margaret--1000 La Mesa Vista Dr. , La Mesa
- 460-1000 AMES, Robert (Josephine)--1710 La Mesa Vista Dr. , La Mesa, 92041
- 444-1000 ANDERS, Arthur (Muriel)--1000 Sunset Dr. , La Mesa, 92041
- 463-1000 ANDOLSEK, Frank (Tonska)--Dennis, Peggy, Dean--1000 Ingraham, La Mesa, 92041
- 460-1000 ARAIZA, Alfonso C. Jr. (Virginia)--Lisa Ann, Leslie--1420 Wilbur Ave. , La Mesa
- 469-1000 ARDOIN, Leonard (Lucille)--1000 Ingomar, La Mesa, 92041
- 466-1000 ARNETT, Mrs. Virginia--1000 Everidge Dr. , La Mesa, 92041
- 463-1000 ARROWSMITH, Frank (Verla)--1000 Maple Ave. , La Mesa, 92041
- 469-1000 ASARO, James (Anna)--Lena--1000 Olive Ave. , La Mesa, 92041
- 466-1000 ASHBY, Theodore (Mercedes)--Charles, Marie--1000 Jefferson, La Mesa, 92041
- 469-1000 AUGUSTINE, Robert (Dorothy)--Donna, Richard, Ellen--1000 Highland, La Mesa
- 466-1000 AZEVEDO, Manuel (Mabel)--1000 Garfield Dr. , La Mesa
- 469-1000 BABIN, Sherly (Beatriz)--Cecilia--1077 Park Ave. , La Mesa, 92041
- 466-1000 BAILEY, Mrs. Stephen (Jeanne)--Stephanie--1000 La Mesa Plaza, La Mesa
- 466-1000 BAILEY, Warren (Eloise)--Kathy, Paul, Jim, Bill--1704 El Capitan Dr. , La Mesa, 92041
- 466-1000 BAKER, Janet--Theresa, Timothy--1000 Olive Ave. , La Mesa, 92041
- 466-1000 BALDWIN, Mrs. Thomas--1000 Maple Ave. , La Mesa, 92041
- 463-1000 BALISTRERI, John (Rosalie)--Josephine, Marianne, Nina--1000 Ingraham, La Mesa
- 465-1000 BANSEPT, John (Josephine)--1000 Sunset Dr. , La Mesa, 92041
- 469-1000 BARNES, Jerry (Maureen)--Josslyn--1000 Fremontville Plaza, La Mesa
- 466-1000 BARR, Edward (Irene)--1000 Maple Ave. Dr. , La Mesa, 92041
- 466-1000 BARRANCO, Charles (Valery)--Linda, Mary Ann, Charles, Robert, Janice--1000 Sunset Blvd. , La Mesa, 92041
- 463-1000 BATES, George (Carol)--Julie, George, Michele--1000 Colton Drive, La Mesa, 92041
- 466-1000 BATTIN, Ken (Wilma)--Charles, Donald, Christi, Michael--1000 Market Dr. , La Mesa, 92041
- 465-1000 BAUGHMAN, William (Betty)--Michael, Michelle--1000 Olive Dr. , La Mesa, 92041
- 469-1000 BECKER, Mrs. Mary--Doris--1000 Grand Ave. , La Mesa
- 465-1000 BELT, James (Vivienne)--1000 Harwood Ct. , La Mesa
- 469-1000 BEMIS, Frank (Anne)--Susan--1000 Sunset Dr. , La Mesa
- 463-1000 BENKO, John (Lou)--1000 Maple Ave. , La Mesa, 92041
- 469-1000 BENSON, Mrs. Dorothy--Dori, Donna--1000 Sunset Dr. , San Diego
- 463-1000 BERARDNELLI, Nicola (Valia)--1000 Lee Ave. , La Mesa
- 469-1000 BERRILL, Clem (Eileen)--Michael--1000 Zaida Ave. , La Mesa, 92041
- 465-1000 BEVILACQUA, Jerry (Florence)--David, Marcia--1000 Park Dr. , La Mesa, 92041
- 463-1000 BLANK, Clarence J. (Catherine)--Barbara, Nancy, Janet, Susie, Frank--1000 Grand Ave. , La Mesa
- 466-1000 BLESSING, L.F. (Lucille)--Jane, Mary, Ann, Bill, Donna--1000 Maple Vista, La Mesa, 92041

444-1084 BLINZLER, Urban--1007 Collins St., La Mesa, 92041  
 466-1048 BOBBY, John (Anna)--4752 Maple Ave., La Mesa  
 465-1126 BOELHAUF, Harold (Bertha)--Linda, Russell, Laura--1094 Mesa Terrace,  
 La Mesa, 92041  
 466-1010 BORGERDING, Charles (Lucille)--1086 Lee Ave., La Mesa, 92041  
 463-1045 BOTTE, Louis (Peggy)--Lisa, Paul, Anthony, Chris--1015 Julia Way, La Mesa,  
 92041  
 466-1101 BOWMAN, John (Marion)--Frances, Molly, Eileen, Conway--1063 Lamon Ave.,  
 La Mesa  
 466-1120 BOYD, Anna--1100 Delta Ave., La Mesa, 92041  
 469-1005 BOYLE, T.G. (Marian)--Kathy--1047 Francis St. Terrace, La Mesa  
 BRADDICK, Miss Hazel--1130 Franklin St., La Mesa  
 465-1103 BRASCHE, Lawrence (Edith)--Edythe--1015 Yale Ave., La Mesa  
 466-1072 BRIGHTON, Mrs. Chester (Inez)--Carleton, Catherine--1100 4th St.,  
 La Mesa,  
 465-1001 BRODING, Harold (Marion)--Cathy, Margo, Larry, Bill, Monica, Beth, Bena--  
 1080 Constance, La Mesa, 92041  
 466-1056 BRONK, J.J. (Virginia)--1007 Lee Blvd., La Mesa  
 466-1100 BRUM, Mary--1000 Garfield St., La Mesa,  
 460-1041 BROWER, Arnold (Opal)--1120 Marjorie Ave., La Mesa  
 466-1003 BROWN, Charles (Helena)--Renee, Bridget--1008 Park St., San Diego, 92115  
 466-1102 BROWN, David (Irene)--1110 Madison Way, La Mesa,  
 466-1002 BROWN, Mrs. Gertrude--1111 Maple Ave., La Mesa, 92041  
 466-1076 BROZIK, John (Patricia)--Larry, David, Catherine, Eugenie, Steven, James,  
 Julia, John--1000 Highway, La Mesa, 92041  
 466-1047 BUCKELEW, J. Everett (Adeline)--1003 Jefferson Ave., La Mesa, 92041  
 466-1105 BURDICK, Carl (Mary)--1100 4th St., La Mesa,  
 463-1008 BURROWS, Mrs. Terry (Dolores)--Steven, Colleen, Susan--1074 Santa St., La Mesa,  
 92041  
 469-1070 BUTCHER, Mrs. William (Celeste)--Andrea, Marie, Roberta--1000 Paula Ave.,  
 La Mesa,  
 466-1047 CALABRO, Louis (Ann)--Steven--1044 St. Colum St., La Mesa,  
 460-1025 CAMPBELL, James (Lorraine)--Anne, Mike, Tim--1072 Maple St., La Mesa,  
 92041  
 460-1004 CAMPBELL, Rita--1118 Wilson St., La Mesa,  
 463-1040 CAPPELLO, Louis (Carolyn)--Anthony, Vincent--1046 Normandie Place,  
 La Mesa  
 463-1028 CAPUANO, Eugenia--191 La Rose Circle, 1000 Julia Street, La Mesa  
 463-1100 CARDENAS, Mrs. Virginia--Carolina--1007 Orange Ave., La Mesa, 92041  
 466-1114 CARLIN, James (Madeline)--Jamie, Elaine, Thomas--1036 Curtis Place,  
 La Mesa, 92014  
 469-1107 CARLINO, Sam (Denise)--Julie Ann, Victor--1107 Franklin, La Mesa  
 469-1024 CARLINO, Victor (Genevieve)--Sam, Gene Ann, Victor--1100 Union, La Mesa  
 466-1000 CARPENTER, Marie--1007 Wood St., La Mesa  
 466-1078 CARTER, Thomas (Julia)--Juliann, Thomas, Therese, Christopher, John, Joseph--  
 1004 Woodland Ave., La Mesa  
 460-1044 CASS, John (Shirley)--Virginia, Pamela--7330 Santa Maria St., La Mesa  
 466-1102 CASSIDY, Arthur J.--1000 Park St., San Diego, 92115  
 463-1006 CASTIGLIONE, Joseph (Orlena)--Joseph, Sandra, Nicholas, Susan--  
 1077 Olive Ave., La Mesa  
 463-1013 CATERINA, James (Therese)--Gerry, Steve, Bill, Donna, Paula--  
 1001 Madison Blvd. Lane, La Mesa  
 466-1009 CAUCHON, Eugene (Margaret)--Leo, Theresa, Helene, Stephanie, Lisa--  
 1017 Paula Ave., La Mesa, 92041

465-188 CAVANAGH, H.C. (Sandra)--Johnna, Carolyn, Cynthia, David--  
1880 S. Main St., La Mesa

466-187 CELESTE, Ben (Catherine)--1870 S. Main St., La Mesa, 92041

463-186 CHADWICK, Richard J. (Marie)--Mary Kay, Richard Jr., Sandra, Jackie,  
Donald--1860 S. Main St., La Mesa, 92041

463-185 CHARLES, Bobby E. (Margaret)--Stephen, David--1850 S. Main St., La Mesa

469-184 CHARTIER, Wilfred (Clara)--1840 S. Main St., La Mesa, 92041

460-183 CHESLOCK, Mrs. Stanley (Rita)--Stanley, Terry--1830 S. Main St.,  
Apt. L,  
La Mesa, 92041

444-182 CHEVALIER, Edward--Rene'--1820 S. Main St., El Cajon

466-181 CHUBB, Eugene (Carol)--Kim, Tommy--1810 S. Main St., La Mesa

463-180 CHUBB, Jane--1800 S. Main St., La Mesa, 92041

466-179 CLARKE, V. William (Amelia)--Karen, James--1790 S. Main St., La Mesa

469-178 CODDINGTON, Walter R. (Helen)--1780 S. Main St., La Mesa, 92041

463-177 CODDOU, Joseph W. (Yvonne)--John--1770 S. Main St., La Mesa, 92041

469-176 COLE, Marie--1760 S. Main St., La Mesa, 92041

469-175 COLE, Vernon E.--1750 S. Main St., La Mesa, 92041

469-174 CONTI, Anthony (Melvis)--Cynthia, Anthony, Melani--1740 S. Main St.,  
San Diego

463-173 COOLEY, Robert Sr. (Kathryn)--Bruce--1730 S. Main St., La Mesa

469-172 CORE, Frank (Antonina)--1720 S. Main St., La Mesa, 92041

465-171 CORELLA, William (Maria)--Amano, Billy, Elsa, Richard, Maurice--  
1710 S. Main St., La Mesa, 92041

466-170 COSGRIFF, Richard (Rita)--Mary Michelle--1700 S. Main St., La Mesa, 92041

463-169 COSTANTINO, John, Lisa, Tina--1690 S. Main St., La Mesa

463-168 COVENY, Miss Cecelia--1680 S. Main St., La Mesa

463-167 COVHER, Claude (Margaret)--John, Mary, Mike--1670 S. Main St., La Mesa, 92041

469-166 COX, James (Patricia)--1660 S. Main St., La Mesa, 92041

469-165 COY, Mrs. Kathleen--1650 S. Main St., La Mesa

469-164 CREAM, Mrs. Betty--Timothy, Thomas--1640 S. Main St., La Mesa, 92041

463-163 CRILLY, Mrs. George (Lucienne)--1630 S. Main St., La Mesa, 92041

466-162 CRUSE, Joseph (Anna)--Carol, Beth, Cathy--1620 S. Main St., La Mesa, 92041

466-161 CUNNINGHAM, Gordon (Pearl)--Christine, Gordon Jr., Pearl Ida,  
Gordon Sr--1610 S. Main St., La Mesa, 92041

469-160 CURLEY, Charles (Leona)--Laureen, Patricia--1600 S. Main St.,  
La Mesa, 92041

463-159 CURTIS, Dr. Ervin (Joelyn)--Shawna, Dean--1590 S. Main St., La Mesa

463-158 CUTTER, Donald (Josephine)--Donald Jr., Debra--1580 S. Main St.,  
La Mesa, 92041

463-157 DALTON, Dr. Harold (Marie)--1570 S. Main St., La Mesa, 92041

469-156 DANE, Richard (Magna)--Kathleen, Karen, Douglas--1560 S. Main St., San Diego,  
92115

460-155 DAVIES, James (Nikki)--Pam, Patty--1550 S. Main St., La Mesa, 92041

460-154 DAVIS, Joe (Dolores)--Aida, Maria Elena, Carmen, Armida--1540 S. Main St.,  
La Mesa, 92041

469-153 DECKER, William (Beverly)--Rae-Dean, Lynn--1530 S. Main St., La Mesa, 92041

463-152 DEHOFF, David (Charlene)--Sharon--1520 S. Main St., La Mesa

463-151 De La TORRE, Adrian L. (Marilyn P.)--Gregory, Paula, Adrian III, Kevin,  
Barbara--1510 S. Main St., La Mesa,

466-150 DEMARIO, Lucy--1500 S. Main St., La Mesa

466-149 DeMONTAGNE, Maurice (Evelyn)--Denise, Diane, Richard--1490 S. Main St.,  
La Mesa

- 463- DENNING, William (Jane)-- , La Mesa  
DeROSE, Henry-- , La Mesa, 92041
- 444- DESANTIS, Dan (Lee)--Nicky, Lou, Lisa-- , El Cajon
- 466- DETERS, Ray (Viola)-- , La Mesa, 92041
- 466- DETERS, Raymond L. Jr. (Patsy)--Raymond III, Mary-- , Apt. B,  
La Mesa, 92041
- 469- DILABIO, Ronald (Marguerite)--Richard, Anthony, Elaine-- ,  
Apt. C, La Mesa, 92041
- 466- DILL, Elmer (Nancy)--Anthony, Peter, Vincent, Larry, Tina, Stephen,  
Catherine, Cecelia-- , La Mesa, 92041
- 465- DOBRON, Daniel (Juanita)--Thomas-- , La Mesa, 92041
- 463- DONNELLY, John (Nanette)--Mark, Laurene-- , La Mesa, 92041
- 463- DORIA, Dr. John (Beatriz)--Andrea, Michele, Juliana, John, Victor, Lisa,  
Consuelo, Gabriela-- , La Mesa, 92041
- 463- DORVAL, Alfred G. (Belle)-- , La Mesa, 92041
- 466- DOWNEY, George (Emma)--Edward-- , La Mesa, 92041
- 465- DRAZKOWSKI, Jerome (Michelle)-- , La Mesa, 92041
- 465- DRIESCHER, Elva M.-- , La Mesa, 92041
- 465- DUFFY, Elizabeth-- , La Mesa, 92041
- 466- DUNCAN, Paul (Frances)-- , La Mesa, 92041
- 469- DUNCAN, Thomas D. (Shirley)--Michael, Mark, Mary-- ,  
La Mesa, 92041
- 469- DUNN, Mrs. Dewey N.--Dennis, Tim-- , La Mesa, 92041
- 465- DUPREE, Floyd (Leona)--Mary, Michael, Dennis-- ,  
La Mesa, 92041
- 469- DYE, George (Leonora)-- , La Mesa, 92041
- 469- DYE, Harlan (Victoria)--Richard, Cecilia, Dorothy, Rosalie-- ,  
La Mesa
- 465- EASLER, Dr. Kenneth (Patricia)--Kimberly, Valerie, Kevin-- ,  
La Mesa
- 469- ESQUIBEL, Benjamen (Tillie)--Lucillie, Vallirie, Victor, Triney, Richard--  
 , San Diego, 92115
- 465- EVERS, Ellis (Virginia)--Denise, Diane, Dennis-- , La Mesa
- 469- FEGAN, Evelyn H.--8975 Mariposa St., La Mesa, 92041
- 466- FELDHAUS, Bernard (Hilda)-- , Lemon Grove, 92045
- 463- FERRARA, Barney (Frances Marie)--Threse, Jennifer, Thomas & Linda Ferrara--  
 , La Mesa, 92041
- 469- FERRIER, Thomas (Rita)--Robert, Danita, Stephanie, Cynthia, Peggy--  
 , La Mesa, 92041
- 465- FINCH, Frank (Neola)--Mike, Linda, Timmy, Tommy, John, Peter, Danny--  
 , La Mesa, 92041
- 463- FINNIGAN, Charles (Hermina)--Kathleen, Mary-- , La Mesa,  
92041
- 466- FISCHER, Irwin (Helen)-- , La Mesa, 92041
- 463- FITZSIMMONS, John (June)-- , La Mesa, 92041
- 460- FLEMING, William (Helen J.)--Michael, Lisa, Lance-- ,  
La Mesa
- 460- FORD, John (Alice)--Anne Marie, Patrick-- , La Mesa, 92041
- 469- FORD, Robert--Brian-- , La Mesa, 92041
- 463- FORREST, Virginia-- , La Mesa
- 469- FOUCAULT, Leon Phillip (Mary Louise)--Leon Ernest, Sandra, Kathryn, Teresa--  
 , La Mesa



447-1007 FOWLER, Thomas (Donna)--Tonya--1007 4th St., El Cajon  
 460-1072 FOX, Lt. William (Martha)--Mary, Christina--1072 10th St., La Mesa, 92041  
 463-1008 FOX, William (Phyllis)--Jennifer--1008 10th St., La Mesa, 92041  
 469-1040 FREED, James (Helen)--Wendy, Lisa, Mark, Thomas--1040 10th St.,  
 La Mesa, 92041  
 466-1006 FREITAS, Patrick--Ramona--1006 10th St., La Mesa, 92041  
 463-1014 FROWISS, Mattie--1014 10th St., La Mesa  
 469-1012 FUGINA, Henry F.--1012 10th St., La Mesa  
 463-1011 GADLER, Richard--1011 10th St., La Mesa, 92041  
 GAEB, Mercedes--1011 10th St., La Mesa, 92041  
 466-1010 GARCIA, Ygnacio L. (Adela)--Ygnacio, Michael--1010 10th St.,  
 La Mesa  
 469-1010 GARDNER, Ralph (Sheila)--1010 10th St., La Mesa, 92041  
 583-1010 GAUGHEN, David F. (Barbara)--Davey, Barbara--1010 10th St.,  
 San Diego, 92115  
 460-1010 GEORGE, Jed (Faye)--Jimmy--1010 10th St., La Mesa  
 469-1014 GERHART, Donald (Mary)--Kevin, Keith, Kenneth, Kirk, Margaret Alberterst--  
 1014 10th St., La Mesa, 92041  
 469-1011 GETCHMAN, William (Jennie)--1011 10th St., La Mesa  
 463-1011 GIERNET, John (Darlene)--Allen, Dale--1011 10th St., La Mesa, 92041  
 466-1016 GILB, Walter A. (Virginia)--Marlene--1016 10th St., La Mesa, 92041  
 465-1016 GILFOY, John J. (Melinda M.)--1016 10th St., La Mesa, 92041  
 469-1011 GILMORE, Gaynor (Anne)--Mary, Kelly, Terry, Annette, Lynn--  
 1011 10th St., La Mesa  
 466-1011 GILMORE, Vincent (Jean)--1011 10th St., La Mesa, 92041  
 463-1011 GIMBEL, John P. (Virginia)--Cathi, Kelly--1011 10th St., San Diego, 92119  
 466-1011 GLIEBE, Joe (Frieda)--Marilyn, Michael, Cathy Jo--1011 10th St., La Mesa,  
 92041  
 465-1011 GOLDSMITH, William (Beatrice)--1011 10th St., La Mesa, 92041  
 469-1011 GOODE, Mrs. Elizabeth--Danny--1011 10th St., La Mesa  
 469-1011 GRANTHAM, Mrs. Gertrude--Pattie--1011 10th St., La Mesa  
 466-1011 GROSSE, Alvin--David, Jeannine, Roberta--1011 10th St., La Mesa  
 286-1011 GRUNTORAD, Ervin (Lois)--Susan--1011 10th St., San Diego, 92115  
 466-1011 HAGEDORN, Herman (Madeline)--Denise--1011 10th St., Lemon Grove, 92045  
 582-1011 HAGEN, Ann--1011 10th St., San Diego, 92115  
 469-1011 HAIDLEY, Lyle (Matilda)--John Russell--1011 10th St., La Mesa, 92041  
 463-1011 HAND, Thomas (Kathryn)--Kathryn, Maureen, Terrence, Deborah, Eugene,  
 Christopher--1011 10th St., La Mesa, 92041  
 466-1011 HANSEN, Mrs. Peggy--Karen, John--1011 10th St., La Mesa, 92041  
 463-1011 HARRISON, Sam (Mildred)--Sandy, Randy, Janine, Roger, Ronald--  
 1011 10th St., La Mesa, 92041  
 465-1011 HAVILAN, Leo (Rosemary)--Karen, Melissa, Kathleen--1011 10th St.,  
 La Mesa, 92041  
 466-1011 HAWKINS, Warren (Frances)--1011 10th St., La Mesa, 92041  
 463-1011 HAYNES, Charles B. (Clara)--Kathy--1011 10th St., San Diego, 92115  
 469-1011 HEAD, Robert F. (Mary Ann)--Diana, Donna, Deborah--1011 10th St.,  
 La Mesa  
 469-1011 HEILMAN, Dea (Thelma M.)--1011 10th St., La Mesa, 92041  
 296-1011 HENDERSON, Mrs. Joanne--Bernadetta, Donald--1011 10th St., San Diego  
 466-1011 HENLE, Alois (Vera)--1011 10th St., La Mesa, 92041  
 469-1011 HENRY, Gordon (Mary Jane)--Geraldine, Roy, Katherine--1011 10th St.,  
 La Mesa  
 469-1011 HERALD, Robert (Marie)--John--1011 10th St., La Mesa, 92041

463-~~1028~~ HICKEY, E. Margaret--Margaret Hood--~~4288~~ Holliston Ave. , La Mesa, 92041  
469-~~1028~~ HINCK, Mrs. Albert (Marilyn)--Susan, Joyce--~~4717~~ Mariposa , La Mesa  
465-~~1041~~ HOEFLER, Edward (Marie)--Paul, Bruce--~~4820~~ La Mesa Blvd. , La Mesa, 92041  
444-~~1070~~ HOFF, George Franklin (Charlotte)--Marie, George, Christie, Michelle--  
~~4882~~ Vista Arroyo, La Mesa  
466-~~1043~~ HOFFMAN, Lucy R.--~~3676~~ 1/7 Laramie Ave. , La Mesa, 92041  
469-~~1043~~ HOLLAND, Dr. George--Linda, Bob, Nance, Sarah, Carol--~~4626~~ Laramie Ave. ,  
La Mesa, 92041  
463-~~1045~~ HOLLEN, John (Sophie)--~~4227~~ Seward St. , La Mesa,  
466-~~1045~~ HORNE, Ernestine--~~4888~~ Parkside Ave. , La Mesa, 92041  
465-~~1047~~ HORTON, Mrs. Catherine--~~4322~~ Holladay St. , La Mesa  
279-~~1048~~ HORTON, Charles (Grace)--~~4982~~ 6th. Street , San Diego  
466-~~1049~~ HORTON, Roy (Louise)--~~4647~~ Seward St. , La Mesa, 92041  
465-~~1050~~ HOWARD, James A. (Lucy)--Patricia, Susan, Jim--~~4513~~ Spring St. , La Mesa,  
92041  
460-~~1060~~ JABLONOWSKI, Raymond--~~7221~~ Madras St. , San Diego, 92115  
466-~~1060~~ JACOBS, A.L. (Jollietta)--~~4882~~ Southridge St. , Apt. #413, La Mesa, 92041  
460-~~1070~~ JACQUES, Leon (Sue)--~~4770~~ University , La Mesa  
466-~~1070~~ JEFFERDS, Donald (Virginia)--William, Kathleen, Patricia, Margaret--  
~~4740~~ St. Thomas Road, La Mesa  
466-~~1080~~ JOHNSON, Harold (Beatrice)--7156 Colony Road, La Mesa, 92041  
426-~~1082~~ JOHNSON, Mrs. Mary A.--~~4920~~ Virginia , La Mesa  
466-~~1088~~ JOHNSON, Richard (Margaret)--Michael, Barbara, Susan, Vincent--  
~~4840~~ California Plaza, La Mesa, 92041  
466-~~1088~~ JONES, Douglas (Patricia)--Kathleen, Douglas, Karen, Susan, Robert--  
~~7288~~ Vermont, La Mesa, 92041  
469-~~1090~~ JONES, William P. (Marie Louise)--~~4627~~ Arroyo Ave. , La Mesa  
466-~~1090~~ KAUFMAN, Blanche--~~4720~~ Parkside Ave. , La Mesa, 92041  
469-~~1090~~ KEAIS, Mrs. James (Dorothy)--Jamie, Janice, James, Terence, Janet Rene!--  
~~4740~~ Orion Ave. , La Mesa, 92041  
466-~~1090~~ KEATING, Francis (Loretta)--Debra, Lisa, Lori, Dena, Donald, Joanne,  
Joanne, Phyllis, Terry, Dennis, Bernadette--~~4887~~ Mariposa, La Mesa  
466-~~1090~~ KELLER, Mrs. Ruth--~~4740~~ Woodland Ave. , La Mesa  
460-~~1090~~ KELLY, Larry (Jane)--Larry--~~4820~~ Home, La Mesa, 92041  
463-~~1090~~ KELLY, Redmond (Isabel)--Betty Anne, Debbie, Madeline--~~4740~~ Parkside Ave. ,  
La Mesa, 92041  
469-~~1090~~ KELLY, Ronald (Pamela)--Lani, Shawna, Justine--~~4627~~ St. Paul St. ,  
La Mesa  
463-~~1090~~ KELLY, Thomas R. (Jean T.)--~~4740~~ Vermont Ave. , La Mesa  
466-~~1090~~ KENWARD, Fred J. (Frances)--~~4120~~ Jackson Way, San Diego, 92115  
466-~~1090~~ KERLEY, George H. (Katharine)--~~4820~~ Mariposa, La Mesa, 92041  
463-~~1090~~ KERMODE, William R. (Elizabeth)--Audre Ann--~~4720~~ Parkside Ave. , La Mesa,  
92041  
465-~~1090~~ KERNS, Mrs. Jimmie (Charlene)--Don, Michelle--~~4740~~ Laramie Ave. ,  
La Mesa, 92041  
469-~~1090~~ KINSELLA, James (Dorothy)--Katie, Agnes, Sally, John, Patrick--  
~~4720~~ Jaramilla Ave. , La Mesa, 92041  
469-~~1090~~ KINZIG, Mary B.--8564 Tio Diego, La Mesa  
465-~~1090~~ KIRK, Carl (Rosalind)--R. Yvonne, Cheryl, Curtis, Carla--~~4770~~ Normandie Plaza,  
La Mesa, 92041

- 469-~~2478~~ KNOX, Mrs. Dorothy--Nancy, Rebecca, Karen--~~7724 Lomas Ct.~~, La Mesa  
466-~~2487~~ KOENIG, Leonard J. (Bobbie)--Michelle, Paul, Suzanne--  
~~4827 The Mesa Way~~, La Mesa  
466-~~2488~~ KOLB, F.F. Hartford--~~7728 Howard~~, La Mesa, 92041  
469-~~2489~~ KOLLARS, Hilary J. (Rose Mary)--Timothy, James--~~7728 Calvary Blvd.~~,  
La Mesa  
466-~~2494~~ KOOGLER, Roy A. (Leona C.)--~~4972 Linden Way~~, La Mesa, 92041  
463-~~2497~~ KRAFT, Wayne (Janet)--Lisa, Joseph, John, Paul, Mary--~~4921 Grand St.~~,  
La Mesa, 92041  
460-~~2492~~ KRAIL, Irving W. (Gladys)--~~4922 Mission St.~~, La Mesa  
469-~~2495~~ KRAMM, Hans (Patricia)--Marlene, Rosalie, John, George--~~7728 Terrace~~,  
La Mesa  
466-~~2496~~ KRON, Alfred J. (Dorothy)--~~4922 Tracy Lane~~, La Mesa  
460-~~2494~~ KUCERA, Charles Jr.--~~4927 Alvarado Rd.~~, Apt. K141, La Mesa, 92041  
460-~~2494~~ KUCERA, Darrell--~~4927 Alvarado Rd.~~, K141, La Mesa  
460-~~2497~~ KUEPPER, Kurt (Angela)--Erica--~~7728 Buckwood St.~~, La Mesa  
469-~~2498~~ LABER, John J. (Helen P.)--Daniel, Steven--~~4927 Maple Ave.~~, La Mesa,  
92041  
466-~~2497~~ LABREQUE, Elizabeth--~~7724 University Ave.~~, La Mesa, 92041  
463-~~2495~~ LACERTE, Onil (Georgette)--Onil Jr., Pamela--~~7728 Sunset Blvd.~~, La Mesa  
463-~~2496~~ LAFRENIERE, Gerard (Patricia)--Michael, Dorene--~~4925 Waltham St.~~,  
La Mesa, 92041  
466-~~2497~~ LAMB, Dorothy--~~7728 Greenwood~~, La Mesa, 92041  
466-~~2492~~ LA MOE, Jean--~~7717 Howard~~, La Mesa  
465-~~2498~~ LANGLOIS, Eugene Sr. (Helene)--Eugene Jr., Kari--~~4925 Panama Ave.~~,  
La Mesa,  
466-~~2495~~ LANOIS, Dr. Esdras J. (Dorothy)--~~4925 Lomas Ave.~~, La Mesa  
469-~~2495~~ LARSON, Jack B. (Alice M.)--Paul, John, Jack--~~4925 Harmony Lane~~,  
La Mesa, 92041  
469-~~2496~~ LAWLOR, Mrs. Jean--~~4927 Grand St.~~, La Mesa, 92041  
442-~~2498~~ LEE, Mrs. Mary--~~7728 Terrace Rd.~~, La Mesa  
463-~~2498~~ LEHNER, William (Genevieve)--~~4927 La Mesa Blvd.~~, Apt. 75, La Mesa, 92041  
466-~~2496~~ LEMUS, George (Carmen)--Agnes, Sarita, Henry, Robert--  
~~4925 Loma Blvd St.~~, San Diego, 92119  
469-~~2495~~ LEONE, Anthony J. (Mary H.)--~~4925 Shadow Blvd~~, Grossmont, 92041  
466-~~2496~~ LESTRANS, Joseph M. (Marie)--~~4927 Grand St.~~, La Mesa, 92041  
469-~~2492~~ LEVEQUE, Emile (Trudy)--Vickie, Florida C.--~~4925 Grand St.~~, La Mesa, 92041  
466-~~2495~~ LEVIKOW, Mrs. Joseph (Lillian)--~~P.O. Box 422~~, La Mesa  
463-~~2496~~ LIMA, Vito (Sharon)--Terri, Johnny, Tommy--~~4911 79th St.~~, La Mesa, 92041  
466-~~2495~~ LINDSEY, Robert William (Rosemary)--~~4925 Justice Ave.~~, La Mesa, 92041  
466-~~2496~~ LINT, Mrs. Marion--Deborah--~~7728 Alvarado St.~~, La Mesa, 92041  
281-~~2495~~ LIPE, Robert (Mary)--~~4925 Loma Blvd St.~~, San Diego, 92105  
463-~~2497~~ LOFTUS, Charles R. (Marianne)--Claudia, Robyn--~~4925 Justice St.~~, La Mesa,  
92041  
469-~~2494~~ LOLLI, Robert (Patricia)--Dennis, Steven, Mark, Kevin, Janine, Sharon, Damon--  
~~4925 Diamond~~, La Mesa, 92041  
460-~~2495~~ LORDEN, Frank (Rose C.)--~~4927 La Mesa Blvd.~~, La Mesa  
469-~~2495~~ LOWE, Gerald W. (Dorothy)--~~7728 Terrace St.~~, La Mesa  
469-~~2494~~ LUCERO, Mike S. (Louise)--~~4925 Grand St.~~, La Mesa, 92041  
469-~~2495~~ LUKAS, Joseph (Dorothy Irma)--~~7722 Annapolis Ave.~~, La Mesa, 92041  
469-~~2495~~ LUPO, Domenico (Antoinette)--~~4925 Francis Way~~, La Mesa, 92041  
282-~~2495~~ LYNCH, Mrs. Phyllis--Lisa, Lori, Dena--~~7728 Central~~, San Diego,  
466-~~2498~~ MAGNUS, Edward (Vivian)--~~4911 Jefferson Ave.~~, La Mesa, 92041

- 465- MALLEK, Mrs. George (Selma)-- , La Mesa  
466- MANTOAN, Aldo (Mary)-- , La Mesa, 92041  
463- MANUEL, Mrs. Bernice--Anne, Nina, Chris, Joan, Mary, Rose--  
, La Mesa  
466- MARAK, Myrtle-- , La Mesa, 92041  
442- MARASY, Marc (Virginia)--Maureen, Marcia--  
, La Mesa, 92041  
460- MARINESI, Joseph (Ancela)-- , La Mesa, 92041  
460- MARRIOTT, Francis D. (Lois)--Valerie, Cynthia, David, Peter, Michele--  
, La Mesa, 92041  
466- MARTIN, H. Lucille-- , La Mesa  
465- MARUSKA, Frank (Helen)-- , La Mesa, 92041  
465- MASSON, Jack (Pat)--Aaryn, Ann-- , La Mesa  
469- MATTHEWS, John W. (Ann)-- , La Mesa  
463- MAY, Harold (Mary)-- , La Mesa, 92041  
463- McARRON, Terence (Rosemary)-- , La Mesa, 92041  
469- McCABE, Miss Mary-- , La Mesa, 92041  
466- McCALLION, Mrs. M.B. (Betty)-- , La Mesa, 92041  
444- McCARTHY, John T. (Eileen)--Michael, Kathy, John, Gary, James,  
Anne, Tisa-- , La Mesa, 92041  
466- McCARTHY, Tom (Dorothy)--Tim, Pat, Nancy--  
, La Mesa  
465- McCLURE, Ray (Yvonne)--Michael, Larry, Lorraine--  
, La Mesa, 92041  
466- McCORMICK, James Jr. (Mary)--Trudie, Martin, Eileen--  
, La Mesa, 92041  
463- McCURDY, Catherine-- , La Mesa  
460- McGINNIS, Anne-- , Apt. D, La Mesa, 92041  
460- McGRIEVY, J.L.-- , La Mesa, 92041  
465- McKEE, James (Julie)--Cherri, Howard, Rebecca--  
, La Mesa, 92041  
465- McKENZIE, Mrs. William (Esther)-- , La Mesa  
466- McKEON, Leo S. (Josephine)-- , La Mesa, 92041  
McLAUGHLIN, Joseph (Florene)--Joseph, Erin, Thomas, Michael, Patricia--  
, La Mesa  
465- McMULLEN, John (Mafalda)-- , La Mesa, 92041  
460- McNICHOL, Frank (Helen)--Francis, Eileen, Kevin, Timothy--  
, La Mesa  
466- McVEIGH, Molly-- , La Mesa  
466- MEADE, John (Mary)-- , 92041  
582- MEADE, Thomas (Janice)--Suzanne, Christopher-- , San Diego, 92115  
469- MEIER, Arthur (Eileen)--Kathleen, Arthur, Marie--  
, La Mesa  
469- MENDENHALL, John (Margaret)-- , La Mesa, 92041  
465- MERINO, Albert (Marina)--Mark, Bruce, Nancy-- , La Mesa  
466- MERTENS, Rose-- , La Mesa  
466- MILICH, George (Catherine)--Edward, David, Paul--  
, La Mesa, 92041  
460- MILLER, Mrs. Edward (Patricia)--Kimberly, Edward III--  
, Spring Valley  
466- MILLER, Nelson (Lidwina)-- , La Mesa, 92041  
MILLER, William J. (Elisabeth)-- , La Mesa, 92041  
444- MILLS, Andrew (Helen)--Judy, Marc, Jennifer-- , El Cajon  
466- MINANDO, William (Mary)--Frank, Mary Agatha-- , La Mesa, 92041

- 466-1066 MINCEY, Peter (Alta)--Mary Ann, Melinda, Clara (grandmother)--  
4777 74th St. , La Mesa, 92041
- 460-1070 MITCHELL, Galen (Patricia)--Bruce, James, Kathleen, Robert, Thomas--  
8577 Rainbow St. , La Mesa
- 469-1068 MITCHELL, Roy (Susie)--8842 Tuleton, La Mesa, 92041
- 465-1067 MONACO, Edward (Billie Joann)--Mark, Jeffrey, Brian, Stephen--  
4828 Rosewood St. , La Mesa
- 466-1078 MONEK, Dr. George (Aisne)--Lesley--1280 Valley View Road, La Mesa
- 469-1065 MONTIJO, Karl (Katherine)--Stephen, Thomas, Robert, Timothy, Karla--  
8877 Cherry Chase St. , La Mesa
- 460-1060 MORAN, Jim (Patricia)--Jim Jr., Mary, Sharon, Mike, Maureen, Peggy,  
Billy, Danny--4975 Avenida, La Mesa
- 466-1079 MORGAN, Alfred (Nonie)--Miss Annie O'Reilly--4885 La Mesa Blvd. , La Mesa
- 466-1080 MORIARTY, Jerry (Eva)--7780 Sunset, La Mesa
- 469-1077 MURAWSKY, Edward (Helen)--Jane, Edward--1821 Imperial Ave. , La Mesa,  
92041
- 463-1075 MURPHY, James J. (Marie)--Maureen, Dan--4796 Parker Hill Road, La Mesa,  
92041
- 460-1076 MURPHY, Dr. William--Theresa--7047 El Cajon Blvd. , San Diego, 92115
- 466-1061 NANARTOWICH, Edward J. (Dorothy W.)--7827 La Mesa Blvd. , La Mesa,  
92041
- 463-1067 NASCHAK, John (Katherine)--Michael, Michele, Bruce--4888 3rd St. ,  
La Mesa, 92041
- 460-1073 NEEDHAM, Mrs. John T. (Louise)--7020 3rd St. , La Mesa
- 460-1068 NEMECHEK, Leland S. (Janet)--7822 Mesa Vista St. , La Mesa, 92041
- 460-1066 NESBITT, Mrs. Wallace (Mary Clare)--8888 3rd St. , La Mesa, 92041
- 466-1072 NUGENT, Lonnie (Adele)--Teresa, Dennis--4827 Edgewood Ave. , La Mesa,  
92041
- 466-1065 OBERBAUER, Carl (Hilda)--8828 Victory Road, La Mesa
- 469-1069 O'DONNELL, Mrs. Albertine--Emily Hobbs--7188 Colony Road, La Mesa,  
92041
- 463-1069 O'DONNELL, Mrs. Walter W. (Mary)--8828 University, Ave. , Apt. #3, La Mesa,  
92041
- 465-1068 OLIVER, Norman (Lillian)--Mark, Renee, Stephen--7863 Edgewood, La Mesa,  
92041
- 469-1068 ORSBORN, James--Jeffrey, Dennis, Bruce, Freddy, Noel--8827 Cherry Chase St. ,  
La Mesa, 92041
- 465-1064 ORTEGA, Jesus (Caroline)--Carlos, Fernando, Marco--4827 Edgewood Ave. ,  
La Mesa, 92041
- 465-1071 OSWALT, Dean (Sally)--Marsha, Michael, Deborah--4782 Woodburn St. ,  
San Diego, 92119
- 466-1068 OTTEM, LaVern (Phyllis)--Victoria, Melissa, Regina--7822 Sunset Ave. ,  
La Mesa, 92041
- 469-1071 PALLULAT, Henry (Dorothy)--Ellen, Donna, Susan, Lisa--7847 Mesa Blvd. ,  
La Mesa
- 466-1066 PARKS, Betty--8822 Oak Ave. , La Mesa, 92041
- 466-1061 PAYNE, LeRoy B. (Esther)--Timothy Lee--7847 Edgewood, La Mesa, 92041
- 466-1068 PERKOVAC, Joseph--7882 Sunset, La Mesa, 92041
- 465-1070 PERKOVAC, Steve (Herta)--Irene, Gary, Christian--7877 Sunset, La Mesa,  
92041
- 466-1060 PETROWSKI, Joseph J. (Mary)--John, Mike--7785 Greenwood Blvd. , La Mesa



465-1014 PFOHL, Richard (Michele)--Alan, Scott--4627 Tenth Lane, San Diego, 92115  
 466-1017 PIERCE, Mrs. Philip (Arvilla)--4775 Rossmore Dr., La Mesa, 92041  
 463-1018 PILKERTON, William (Larinda)--Stephen, Deborah, Raymond, David--  
 4765 Bruce Ct., La Mesa, 92041  
 460-1019 POLAK, Eulalie--4777 La Mesa Blvd., La Mesa, 92041  
 469-1020 POSTULKA, De Wayne (Mary Ann)--Perry, Danny, Lon--  
 4777 Rossmore Dr., La Mesa, 92041  
 469-1021 POWERS, Henry (Irene)--Gregory, Catherine, Mary, Leona--  
 7626 Rossmore Ave., La Mesa  
 469-1022 PROVO, Frederick--7725 S/O Anthony Dr., La Mesa, 92041  
 465-1023 QUACKENBUSH, William J. (Margaret M.)--Billy, Diana, Gary, Wendy--  
 5726 Landon Ave., La Mesa  
 460-1024 QUIRICO, Mrs. Jeanne--Karen, Thomas, Stephen--7645 Rossmore Ave.,  
 La Mesa, 92041  
 469-1025 QUIRK, Kenneth (Betty)--Kenny, Carmel--7627 Landon Ave., La Mesa, 92041  
 463-1026 RACINA, Anthony (Pauline)--1128 La Mesa Circle, La Mesa, 92041  
 466-1027 RASMUSSEN, Mrs. George Ann--4775 Rossmore Dr., La Mesa  
 463-1028 REICHERT, Tom (Jean)--Jeff, Therese--7740 Sylvania Ave., La Mesa  
 463-1029 REMINGTON, Mrs. Sally Hayes--Rick--4626 Sylvania Dr., La Mesa, 92041  
 469-1030 RENNY, William (Rosemary)--Patrick, Christine--7771 Santa Maria Dr.,  
 La Mesa  
 465-1031 RICHMOND, Mike (Martha)--Michelle, Gregory, Michael--  
 7746 Camino Dr., Apt. C, La Mesa  
 466-1032 RICKS, Irene--7645 Landon Ave., La Mesa, 92041  
 583-1033 RIHA, George (Dorothy)--James--4670 Yukon Street Dr., San Diego, 92115  
 463-1034 RITZ, Joseph (Kathryn)--Joe, Tom--4147 Vista Dr., La Mesa  
 469-1035 RODRIGUEZ, Santiago (Reinalda)--Nellie, Martin--4726 Landon Ave.,  
 La Mesa  
 465-1036 ROSENBERGER, Frank (Margaret)--Claudia--4382 Redbank, P.O.,  
 La Mesa  
 466-1037 RUDELL, Marie--7746 Sylvania Dr., La Mesa  
 466-1038 RUEMPING, Norbert H. (Eileen)--7671 Cleveland Dr., La Mesa  
 466-1039 RUNETZ, Mae--4726 Sylvania Ave., La Mesa, 92041  
 466-1040 RYAN, William (Georgia)--4777 Rossmore Dr., La Mesa, 92041  
 469-1041 SAENGER, Clarence (Julie)--4726 S/O Anthony, La Mesa, 92041  
 469-1042 SALMON, Albert (Henrietta)--Al, Tony, Darlene, Joey--7746 Sylvania Dr.,  
 La Mesa, 92041  
 469-1043 SANDY, Joseph A. (Ruth)--Elaine, Linda Ann--4626 Sylvania Dr., La Mesa, 92041  
 466-1044 SAN MARTIN, Mrs. Philip (Arline)--Linda--4774 Maple Ave., La Mesa, 92041  
 466-1045 SAPPER, Eugene H. (Elaine)--David, Mike, Steven, Amy--4648 La Cruz Plaza,  
 La Mesa, 92041  
 469-1046 SARDINA, Frank J. (Rose)--Joseph, Roseanna, Katherine, Marie, Francesca,  
 Gaetano--7776 Orion Ave., La Mesa, 92041  
 463-1047 SAVOIE, Lloyd J. (Yolanda)--Lloyd, Carol, Donald, Charlene, David--  
 4871 Beverly Dr., La Mesa, 92041  
 469-1048 SAW, Thomas J. (Madelyn)--Thomas--4626 Sylvania Dr., La Mesa, 92041  
 469-1049 SAWADE, Ralph (Dona)--Lynn, Lew, Cathy, Gayle--7645 Rossmore Dr.,  
 La Mesa  
 469-1050 SCHAFFER, Edmund D. (Bernice)--Martin, Kathryn--7746 Orion, La Mesa,  
 92041  
 469-1051 SCHELL, Vernon (Joyce)--Michael, Dennis--4626 Sylvania Dr., La Mesa

- 466-1162 SCHENK, Marie--4122 Ashland St., San Diego, 92115  
 465-1167 SCHMIDT, Charles (Similienne)--Clarence, Charles--3770 Madison Ave.,  
 La Mesa, 92041
- 465-1168 SCHNEIDER, Mary--4621 Pine St., La Mesa, 92041  
 469-1169 SCHNIEPP, Glen Paul (Ann)--Glen Jr., Mark, Diane--7779 Jackson Hill St.,  
 La Mesa, 92041
- 466-1170 SCHREIBER, G. Harold (Yvonne)--2846 Colman, La Mesa, 92041  
 465-1171 SCHUMACHER, Mrs. Janet--Joan--7188 Green St., La Mesa, 92041  
 463-1172 SCOTSESE, Attilio (Carol)--Lee, Patricia, Anna (grandmother)--  
 4627 Northway St., La Mesa
- 463-1173 SCOTT, Kenneth (Marian)--Timothy, Mark--1122 Stone Way,  
 La Mesa, 92041
- 469-1174 SEE, Donald (Correen)--Jack, Sharon, Linda, Eileen, Sally, Danny,  
 Bridget, Denise, Molly--1476 Stone Vista, La Mesa, 92041
- 463-1175 SEMANCSIN, Joseph (Mary)--Carol, Mark, Martin--1787 Montclair Way,  
 La Mesa, 92041
- 469-1176 SEVCIK, Henry--1228 Lulu St., La Mesa, 92041  
 466-1177 SHAIEB, Afify--4972 Yale Ave., La Mesa, 92041  
 469-1178 SHAIEB, Edward (Helen)--Bill--7386 University Ave., La Mesa  
 469-1179 SHANLEY, Michael (Veronica)--Michael, Thomas, Veronica, John--  
 4628 Pine St., La Mesa, 92041
- 465-1180 SHEA, Betty--7142 Parnell, La Mesa, 92041  
 463-1181 SHUBIN, William (Margaret)--Sandra, Judy, Anne Marie--  
 7788 Wadley St., La Mesa, 92041
- 442-1182 SHULTZ, R. Joseph (Helen)--Joseph, Ann Maria, Carolyn, Danny, Mary Kay--  
 11288 Marston Way St., El Cajon
- 466-1183 SICK, Francis (Margaret)--Dan, Bernadette, Bernard, Conrad, August,  
 Donna, Steve, Max, Christopher, Francis, Tom--1748 San Juan St., La Mesa
- 466-1184 SIGLER, Roy (Evelyn)--1128 Eastway St., La Mesa, 92041  
 463-1185 SIMANELLO, James (Dolores)--James, Susan, Mary Ann, Kathryn, Judy Ann--  
 4272 Mission Ave., La Mesa
- SIMPSON, Mrs. Ruth E.--Kenneth, Wesley, Lucy C. Vidal--7822 Standard Ave., La Mesa
- 466-1186 SINGH, Joseph (Virginia)--Mary, John--784 Princeton, La Mesa  
 469-1187 SKILTON, F.H. (Betty)--Marleen--4671 Sunset St., La Mesa, 92041  
 463-1188 SLABICK, Mike (Frances)--1717 Parkside, La Mesa  
 465-1189 SLEET, Marshall (Anna Mae)--Jeffrey--4673 Ames St., La Mesa  
 SMELKO, Albert (Margaret)--4875 Pine St., La Mesa
- 466-1190 SMELKO, William A. (Sally C.)--Sarah Jo, William, Mark--  
 4847 El Capitan St., La Mesa
- 466-1191 SMITH, Alfonso (Mina)--Darlene, Kathryn, Dennis--4676 Homestead Place,  
 La Mesa
- 466-1192 SMITH, Robert (Bonita)--Susan, David--1817 Standard Lane, La Mesa, 92041  
 460-1193 SMITH, Stella--4827 Maple Ave., La Mesa  
 460-1194 SOKACH, Louis--4847 Standard St., La Mesa
- 466-1195 SPECKMANN, William (Pauline)--1824 Northway Ave., La Mesa, 92041  
 469-1196 SPIESS, Harold (Lucille)--4848 Dale Ave., La Mesa, 92041  
 469-1197 SPIESS, Miss Valerie--4848 Dale Ave., La Mesa, 92041  
 463-1198 SPIVEY, Mrs. Alfred (Corinne)--Dennis, Christopher, Stephen, Timothy, David,  
 Roberta, Robert--4671 Zaida Ave., La Mesa, 92041
- 469-1199 STANGL, Thomas P. (Wilma)--Dawn, Mark--4677 Pine St., La Mesa, 92041  
 466-1200 STEUERMANN, Mrs. Florence--Mary Jo., Sarah--7742 James Place,  
 La Mesa, 92041
- 466-1201 STOUFFER, David (Jeanne)--Anne, Virginia, John--7794 La Merita Place,  
 La Mesa

- 460-1630 STRAMPFER, Otto (Clara Ellen)--Juliana--1937 Serrano St. , San Diego, 92115  
 465-1797 STRANSKY, Leslie L. (Troy H.)--Lester, Judy, Adam--1940 Johnson St. ,  
 La Mesa
- 466-1862 SUCEC, Mrs. Margaret--Rosemary--1936 Serrano, La Mesa  
 460-1739 SWIFT, Walter (Betty)--Maura, Sheila, Shawn, Brian, Ellen, Stacey,  
 Maria Ramos (Exchange Student from Peru)--1913 Lakewood St. , La Mesa  
 465-1828 SYLVESTER, Joseph F. (Evelyn)--1937 La Mesa Blvd. , La Mesa, 92041
- 469-1867 TEBO, William H. (Josephyn)--1943 Serrano Plaza, La Mesa  
 442-1748 TED, Mrs. Mary B.--1948 Serrano Blvd. , La Mesa  
 466-1876 TEICHMAN, Richard P. (Neda)--Richard, Suzanne--1937 Bradford,  
 La Mesa, 92041
- 463-1878 TERRELL, Mrs. O.C. (Fern)--Barbara, Jean--1940 Holliston, La Mesa, 92041  
 466-1843 THIEN, Frank J. (Theresa C.)--1972 Henderson St. , La Mesa, 92041  
 469-1897 THOMAS, Donald (Mary)--Lee--1941 Pacific, La Mesa, 92041  
 463-1895 THOMPSON, Peter (Patricia)--Cyd--4323 Pacific Ave., Apt. 3, La Mesa, 92041  
 460-1876 THORNTON, Catherine--1938 Canyon, La Mesa  
 466-1828 TICKNOR, Mrs. Ruth--1938 390, La Mesa, 92041  
 467-1867 TILLEY, Hoyt--1934 Serrano St. , La Mesa  
 465-1837 TIMBROOK, Elmer Jr. (Elizabeth A.)--1940 El Cajon Blvd. , La Mesa, 92041  
 460-1836 TORBECK, Ambrose B. (Margaret)--1936 Harvard Ave. , La Mesa, 92041  
 466-1834 TOVEY, Mrs. Clara--1937 La Mesa Blvd. , La Mesa, 92041  
 TRACEY, Arthur J.  
 469-1825 TRYSLA, John--1935 Heritage, La Mesa, 92041
- 583-1764 UBER, Mrs. Wilma--1943 Richard St. , San Diego, 92115  
 ULBRAND, Miss Cleo--1937 El Cajon Blvd., Suite 711, La Mesa
- 465-1826 VAN ARSDALE, John (Jean)--Cynthia, David, Judy, Susan--1937 La Torrelle St. ,  
 La Mesa, 92041
- 466-1825 VANDENBERG, Arthur (Dorothy)--Ronald, Lorelle--1937 Bradford St. ,  
 La Mesa, 92041
- 466-1863 VAN FLEET, Barney M. (Kathleen)--1939 374, La Mesa, 92041  
 463-1888 VARGAS, Thomas (Celina)--Mercedes, Juan Carlos, David, Javier,  
 Tomas Jr., Jesus, Sergio, Gloria--1938 Ingraham St. , La Mesa, 92041  
 465-1828 VASIL, Michael (Mary)--1938 Washington St. , La Mesa, 92041  
 465-1828 VATER, Albert (Barbara)--Connie, Richard, Edward, John--  
 4373 Echo Court, Apt. C, La Mesa
- 465-1825 VEGA, Carlos--1937 La Torrelle St. , La Mesa, 92041  
 466-1867 VELTON, Edward (Jane)--Edward, Paul, Katherine, Jennifer--  
 4326 Ave. St. , La Mesa, 92041
- 466-1878 VIRISSIMO, Richard (Virginia)--Debra, Richard, Rebecca, Jeffrey, Danny,  
 Jennifer--1938 St. Julian Court, San Diego, 92119
- 469-1838 VOGT, John A. (Marjorie)--1938 Serrano, Apt. 5, La Mesa, 92041  
 442-1836 VOLK, Ray L. (Evelyn)--173 Waco Way, El Cajon, 92020  
 463-1825 VOLZ, Paul (Marcebilla)--1938 La Mesa Blvd. , La Mesa, 92041  
 466-1868 VONGEHR, Dieter (Ria)--Nadia, Monique--1943 Serrano Plaza,  
 La Mesa
- 463-1864 WACHTEL, Rueben J. (Georgine)--177 Broadway St. , Spring Valley, 92077  
 460-1867 WADE, Wallace (Esther)--Wally, Rick, Pat, David, Mary, Esty, Mike, Tim,  
 Tom, Mrs. Esther Hickey--1938 Arroyo, La Mesa
- 465-1867 WAGNER, Miss Marie--1939 Parkside St. , La Mesa  
 463-1862 WALLACE, Robert J. (Patricia H.)--Kathleen, Kevin, Kim, Chris--  
 1937 Cambridge, La Mesa, 92041

- 463-4275 WALSH, Gerald (Ouida)--Cecelia, John, Madalyn, Catherine--  
7900 Vista, La Mesa, 92041
- 466-4485 WALSH--Margaret, Kay--7800 Lakes View Dr., La Mesa  
WAMSLEY, James E.--7475 Oakwood Road, La Mesa, 92041
- 463-4257 WARREN, J. Arthur (Matil)--Martin, Valerie, Jay, Danny, Edna--  
4700 Normandie Place, La Mesa, 92041
- 463-4133 WELLS, William (Mary Sue)--Billy, Danny, Laura--7675 Normal Ave.,  
La Mesa
- 463-7426 WHERRY, Werner A. (Mavis E.)--Brian, Kevin, Deena--  
7000 Olive Place, La Mesa, 92041
- 463-7385 WIER, Mrs. Eva--8717 Jefferson Ave., La Mesa, 92041
- 465-7199 WILSON, Charles (Dorothy)--Gordon, Kathleen--1388 Echo Ct., Apt. C,  
La Mesa, 92041
- WILSON, Daniel A. (Rene E.)--8723 Fourth St., La Mesa, 92041
- 469-8368 WINFREE, William (Louise)--Rebecca, Daniel, William, Susanne, Paul,  
Jonathan--1384 University Ave., La Mesa
- 469-8387 WOLGAST, Otto (Jean)--Carol--1330 Maple, La Mesa, 92041
- 465-8667 WOLGAT, John (Helen)--Barbara, Thomas, Raymond--4100 Spring St.,  
La Mesa, 92041
- 466-8780 WOLL, John (Dorothea)--Sondra, Dennis, Catherine, John Jr., Jeffrey--  
4200 Avon Dr., La Mesa, 92041
- 466-8813 WOOD, Edward (Ann)--John, Lloyd--1008 Olive Ave., La Mesa, 92041
- 466-8960 WRIGHT, Patricia--P. O. Box 130, La Mesa
- 466-8886 WRIGHT, Mrs. Anne--Elizabeth, Judith--8847 Normandie Place, La Mesa
- 463-4276 WUEBOLD, Bert P. (Janet H.)--Julie K., Lorie A., Amy L., Daniel A.,  
4780 Roberts Knolls Dr., La Mesa, 92041
- 466-4437 YANDA, Robert J. (Johanna)--7000 Terrace Dr., Apt. 7, La Mesa, 92041
- 466-4274 YARRIS, Mrs. Martha--7100 Woodchick Dr., La Mesa
- 469-4226 YBARRA, Frank R. (Nellie)--Olivia--7371 Cornell, La Mesa
- 460-4273 YBARRA, Jesse (Andrea)--Janene, Julie--7871 La Mesa Blvd., La Mesa
- 469-4262 ZEGLER, Henry E. (Helen)--4776 Sandhill Dr., La Mesa, 92041

---

*Joan Nilsen's*

---

Catering Service

★ Weddings are my Specialty

★ Bride's Consultant

**469-8581**

---

## **Sexton's Pharmacy**

8292 La Mesa Blvd.

466-5828

PRESCRIPTION SPECIALIST

GIFT WRAPPING

Dr. Bernard J. Dunn, Pharmacist & Owner

Member St. Sophia Parish

Se Habla Espanol

---

## **PIANO INSTRUCTION**

Beginners Accepted

INQUIRIES INVITED

**Mack-Music**

Phone 466-9241

La Mesa

---

## **ED SHAIEB REALTY COMPANY**

7376 University Ave.

La Mesa, Calif.

**469-2586**

---



---

We Own and Operate Our Own Cleaning Plant

# **VAN'S CLEANERS**

— IN LA MESA SINCE 1938 —

**466-5992**

WE GIVE S & H GREEN STAMPS  
**PICK-UP and DELIVERY SERVICE**

ART VANDENBERG, Owner

Member of the Parish

**8338 LA MESA BOULEVARD**

---

**Watches & Clocks Repaired**

**463-4640**

**BARNEY FERRARA**

**4871 PINE ST. - DIAMONDS SET**

---

It isn't too late to order your

Printing from

**PLAZA PRESS**

**232-7134**

---

---

# **LA MESA CONVALESCENT HOSPITAL**

**7800 Parkway Drive**

**La Mesa, California**

**460-2330**

Registered Nurses on duty 24 hours a day

Physical Therapy - Beauty Shop

Personal Attention Given Each Patient

**VINCENT & WILMA LANG**

**Owners - Administrators**

---

